

User Manual

Galileosky 7

firmware 002



Contents

Introduction.....	5
Package.....	6
Technical Specifications	7
Physical Specifications	8
Safe Operating Rules	9
Contacts Description.....	10
Connection	11
Inserting a SIM-card.....	11
Connecting Power Supply to the Device.....	11
LED indicators.....	12
Connecting to PC.....	13
Operation of the Tracker's units	14
Discrete-analog inputs (DAI)	14
Pulse Count.....	15
Mean Value and Discrete Event Generation.....	15
Frequency Count.....	16
Determination of Strike and Incline	16
Economical Driving "EcoDrive" and Determination of the Driving Style.....	17
Data Archiving to the MicroSD Card.....	17
Autoinformer Function	18
Monitoring Data Transmission	20
Internal Archive Structure	20
Operation with SIM-microchip.....	21
GPRS Traffic Costs Optimization	21
Remote Configuration.....	22
Connecting External Peripheral	24
CAN-interface.....	24
J1939_SCANNER Mode	24
FMS Mode	25
J1939_USER_29bit Mode	26
J1979_SCANNER Mode	27
J1979_29bit Mode.....	27
J1979_USER_29bit Mode	28
J1979_CHECK_PIDS Mode.....	28

Different options of connection to the CAN-bus.....	29
Connecting digital fuel sensors using RS232 protocol	29
Connecting digital fuel sensors using RS485 protocol	30
Connecting Galileosky photo camera to the device.....	31
Connecting 1Wire sensors.....	33
Connecting iButton (DS1990, DS1982) identification key.....	33
Connecting DS18S20 (DS1820, DS18B20) thermometers and DS1923 temperature and humidity sensors	34
Connecting Autoinformer speaker.....	35
Transistor outputs (0/1)	36
Connecting Garmin navigators supporting FMI protocol	37
Connecting REP-500 electrical meter	38
Connecting CAN-LOG	38
Connecting CUB5B indicator	39
Connecting CI5010A weight indicator	39
Connecting Tenzo-M weight indicator	40
Connecting AWT 640 weight indicator.....	40
Connecting WIN SCALE weight indicator.....	41
Connecting devices operating via WIEGAND26 protocol	41
Connecting Matrix 5 RFID-codes reader via RS485 interface.....	41
Connecting DBG-S1 1D dosimeter via RS485 interface	42
Connecting PressurePro tires pressure monitoring system	42
Connecting CarrierDataCOLD500, ThermoKing, Euroscan refrigeration units temperature recorders	43
Configurator	44
Launching the Software.....	44
Device tab	45
Troubleshooting tab.....	47
Command mode tab	48
Graphic interface settings	50
Security	50
Data Transmission	51
Protocol.....	51
Track.....	52
Inputs/Outputs	53
Digital inputs	54
Sound.....	54
CAN.....	55
Data loading and sending to server.....	56

Data loading from the Tracker to file	56
Sending data to server.....	57
Routes for Autoinformer.....	58
Commands List	59
Settings for SMS control.....	59
Data transmission settings	60
Galileosky server exchange protocol settings.....	64
Track parameters setting	67
Information commands.....	71
Service commands.....	74
Voice communication settings.....	78
Analog-discrete inputs setting.....	80
Transistor outputs setting.....	81
Autoinformer setting.....	82
Digital inputs settings	83
CAN settings	87
Photo camera operation settings	89
Bootloader.....	91
USB Channel Download.....	91
GPRS channel download.....	91
Using analog inputs to enter bootloader mode	91
LED operation during reflashing	91
Galileosky Protocol Data	93
Additional Information	98
Certifying	98
Warranty	98

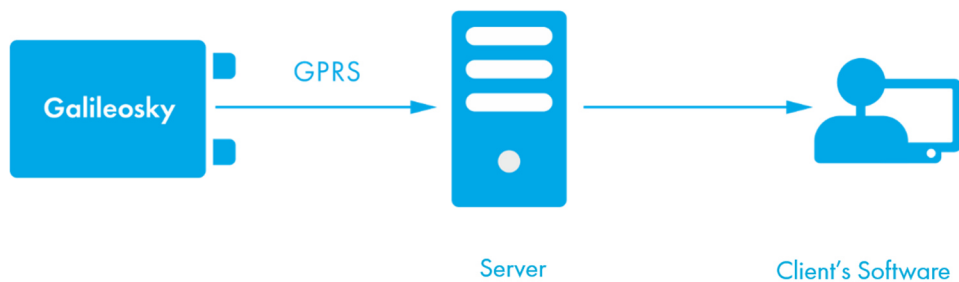
Introduction

1

RSA "Galileosky", LLC produces satellite monitoring equipment (hereinafter – tracking devices, trackers) for GPS and GLONASS real time vehicles monitoring. The tracking devices determine the mobile object location recording the time and route as points with geographical coordinates and send the data to the server to be further processed and sent to the traffic controller panel.

In addition, a number of other vehicle parameters are recorded: the state of analog and discrete inputs of the tracker and the state of digital interfaces.

The tracking devices can be used in any vehicle.



Galileosky Tracker receives a signal about its location from GPS, GLONASS satellites and processes input and output data

Information is sent to the server by means of GPRS and then via the Internet to the operator panel.

To prevent the data from disappearing when there is no GSM/3G signal, each Galileosky tracker has an internal nonvolatile FLASH memory. The tracker also has a built-in battery, which allows operation for 8 hours.

The tracking device provides the following opportunities:

- ✓ vehicles monitoring in real time;
- ✓ a detailed turn by turn track (without any extra points in a straight track);
- ✓ voice communication with the traffic dispatcher;
- ✓ GSM/3G enabled remote software update;
- ✓ continuous troubleshooting of the tracking device through the USB port;
- ✓ car alarm and a remote engine start;
- ✓ securing facilities against intrusion;
- ✓ automatic stops announcement;
- ✓ adjusting the tracker through SMS, GPRS, USB;
- ✓ and others (see sections [Operation of the Tracker's Units](#) and [Connecting external peripheral](#)).

The information sent by the tracker includes:

- ✓ the exact Greenwich time and date;
- ✓ vehicle coordinates: latitude, longitude, height;
- ✓ vehicles speed and direction;
- ✓ vehicle acceleration;
- ✓ inside temperature;
- ✓ inputs (buttons) and analog sensors state;
- ✓ external digital sensors state (fuel, temperature sensors and etc.);
- ✓ discrete outputs state;
- ✓ and others (see details of transmitted data in section [Galileosky protocol data](#))

In addition, the company provides warranty service and technical support on its site.

Before starting the work, study the instruction carefully.

Package

The standard package includes Galileosky tracker, SIM-holder, a connector with contacts, a fuse and a fuse holder, passport, a certificate of equipping a vehicle with GLONASS/GPS devices. Everything extra should be purchased separately.

You will also need:

USB-cable	1
Power supply unit 9-39V (15 W)	1

Technical Specifications

Parameter	Modification				
	7.0 Lite	7.0	7.0 Wi-Fi	7.1	7.1 Wi-Fi
Analog-discrete and pulse frequency inputs	6 pcs; voltage range -0-33V; maximum measured frequency-4 kHz				
Transistor outputs (output 0/1)	4 pcs.; maximum voltage 30V; maximum current 80mA				
Battery type	Li-Ion battery; 560mAh				
Average power consumption	0,48 W	0,54 W	0,6 W		
ADC resolution in bits	16				
CANBUS	J1939, FMS, J1979, OBD II, 29-bit and 11-bit identifiers				
RS485	1				
USB 2.0	Mini-USB, tracker setting, troubleshooting, reflashing				
Accelerometer	built-in				
GLONASS/GPS receiver	Sensitivity – 167 dBm Cold start 25 s.; Hot start 1 s.				
Coordinates determination accuracy, 95% of time, not worse	5 m				
SIM-card type, pcs	Nano-SIM, 2				
Opportunity of installing SIM-microchip	Yes, instead of the second SIM-card				
GSM modem	GSM 850/900/1800/1900, GPRS class 12			GSM 900/1800, GPRS class 12	
3G modem	no			UMTS, WCDMA 900/2100,	
Wi-Fi	no		IEEE 802.11 b/g/n	no	IEEE 802.11 b/g/n
Archive capacity	up to 450 000 points	up to 450 000 points; up to 2 500 000 points for each GB by using micro SD card.			

Parameter	Modification				
	7.0 Lite	7.0	7.0 Wi-Fi	7.1	7.1 Wi-Fi
1-Wire	no	yes			
RS232	no	2			
microSD	no	maximum memory of supported card is 32 GB			
Speakerphone	no	a push-to-talk or a speaker and a microphone			
Speaker (Autoinformant)	no	built- in			
The number of geofences for voice prompts	no	limited by microSD capacity			
Speaker output type	no	Analog (linear output), 250mW			
Increase of functional capabilities	yes, by means of algorithms stored and run at the device with no interference into manufactory firmware code (Easy Logic)				
Protocol of data transmission	1. Galileosky: variable length-tag. 2. EGTS (GOST R 54619-2011, Order № 285 of the RF Ministry of Transportation)				
Enclosure protection	IP54				
GLONASS/GPS aerial	internal				
GSM/3G aerial	internal				
Wi-Fi aerial	internal				

Physical Specifications

Operating temperature range	-40...+45 °C
Storage temperature	-40...+45 °C
Relative humidity	0...90% (0...35 °C); 0...70% (35...55 °C)
Performance (height above the sea level)	0-2000 м
Storage	0-10000 м
Continuous operation from battery	depends on the tracker settings, 8hrs on average
Operating power supply	9-39V; is protected against voltage jumps in the vehicle power supply

Allowable voltage, continuously applied to power input, that does not let the tracker fail	-900...+200 V
Dimension	97,0 mm x 68,0 mm x 22,0 mm
Weight	within 150 g
Body material	plastic
Warranty	1 year since the purchase date;
Average service life	10 years
Internal Li-Ion battery life	500 charge/discharge cycles, three years maximum

Safe Operating Rules

Before using the tracker, study the instructions of GSM/3G/GPRS devices safe operating.

Make sure the polarity is correct when connecting to the power supply.

The device should be connected straight to the vehicle battery, not to the vehicle power supply.

ATTENTION! To avoid failure:

- Make sure the contacts are connected correctly!
- Unused contacts must be well insulated!

ATTENTION! EXTERNAL POWER SUPPLY SHALL BE RATED AS SELV LIMITED POWER SOURCE.

Extra batteries are provided only in Galileosky service center. We strongly advice users NOT to change batteries on their own!

CAUTION! RISK OF EXPLOSION IF BATTERY IS REPLACED BY AN INCORRECT TYPE!

When disposing of this device, please, follow the prescribed measures for the disposal of electronic waste. These symbols on the package mean that all used electronic and electrical equipment must be appropriately disposed at specified places or at a concessionaire for disposal of electronic and electrical equipment. Separate collection of used equipment serves to prevent potential harm to the environment and human health. It is a precondition for reuse and recycling of electrical and electronic equipment. For further information on disposing of your used equipment, please contact your local authority, your waste disposal service or the dealer where you purchased your product.



Contacts Description



Out2	Out0	1Wire	Vol0	CAN_H	RS485A	RXD0	RXD1	IN4	IN2	IN0	VCC
Out3	Out1	GND	Vol1	CAN_L	RS485B	TXD0	TXD1	IN5	IN3	IN1	GND

Contact	Description
VCC	Positive supply voltage
GND	Negative supply voltage
IN0	Zero analog-discrete input
IN1	1st analog-discrete input
IN2	2nd analog-discrete input
IN3	3rd analog-discrete input
IN4	4th analog-discrete input
IN5	5th analog-discrete input
RS485A	A signal of RS485 channel
RS485B	B signal of RS485 channel
RXD0	RXD signal of zero RS232 port (all modifications, except Lite)
TXD0	TXD signal of zero RS232 port (all modifications, except Lite)
RXD1	RXD signal of the first RS232 port (all modifications, except Lite)
TXD1	TXD signal of the first RS232 port (all modifications, except Lite)
CAN_H	CAN_H contact of CAN interface
CAN_L	CAN_L contact of CAN interface
Vol0	Zero contact to connect an external speaker for Autoinformers (all modifications, except Lite)
Vol1	First contact to connect an external speaker for Autoinformers (all modifications, except Lite)
1-Wire	1-Wire interface (all modifications, except Lite)
GND	Ground to connect interfaces which need the ground contact
Out0	Zero transistor output (output 0/1)
Out1	First transistor output (output 0/1)
Out2	Second transistor output (output 0/1)
Out3	Third transistor output (output 0/1)

Connection

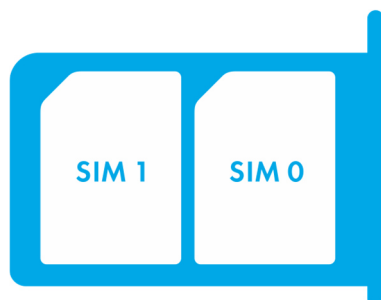
2

Inserting a SIM-card

Use a SIM-card with activated GPRS and SMS services.

Insert the card carefully without applying excessive force.

To eject a SIM-card press the hole in a SIM-holder with a needle, the holder will be ejected automatically.



SIM-card location in the holder.

Inserting a microSD-card

You can insert a microSD-card to Galileosky 7 tracking devices, equipped with slot for microSD-card. Maximum memory supported is 32GB.

Insert the card carefully without applying excessive force according to the picture from the device box.

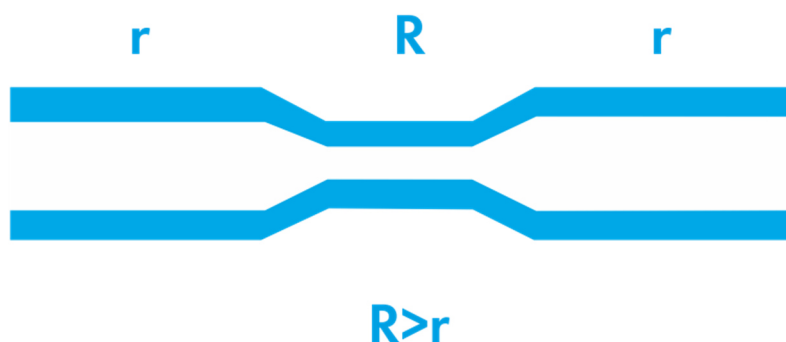


To eject a microSD-card press the card while set in the tracking device, the card will be ejected automatically.

Connecting Power Supply to the Device

Positive supply voltage should be connected to VCC contact, negative supply voltage should be connected to GND (section [Contacts description](#)). If the connection is correct, the red LED will be on.

ATTENTION! Power-supply source needs to provide efficient current rate (more than 1,5 A) and handle impulse load as GSM-module in maximum load may require up to 2 A. Wires, used for power the tracking unit, must have regular diameter throughout the length, not less than 0,5 mm². They should not have any deformations like the one presented in the picture below.



When using such poor-quality wires, the strain parts R have higher resistance and consequently high heat release which can lead to having too low power supply resistance of the tracking unit and short circuit if the protecting wire cover melts.

LED indicators

Red LED is on when the power unit is connected to the tracking device.

Green LED shows the GLONASS/GPS unit status.

Blinking frequency, times	Description
3	GLONASS/GPS unit is not found or is at the initialization stage
2	GLONASS/GPS unit is found but correct coordinates are absent
1	GLONASS/GPS unit works properly, coordinates are found and updated once a second

Blue LED shows the GSM/3G-unit status.

Blinking frequency, times	Description
4	GSM/3G-unit is off
3	GSM/3G-unit is at the initialization stage
2	GSM/3G-unit is found, GPRS-session is activated
1	GSM/3G-unit works properly, server is connected

Purple LED indicates Wi-Fi state.

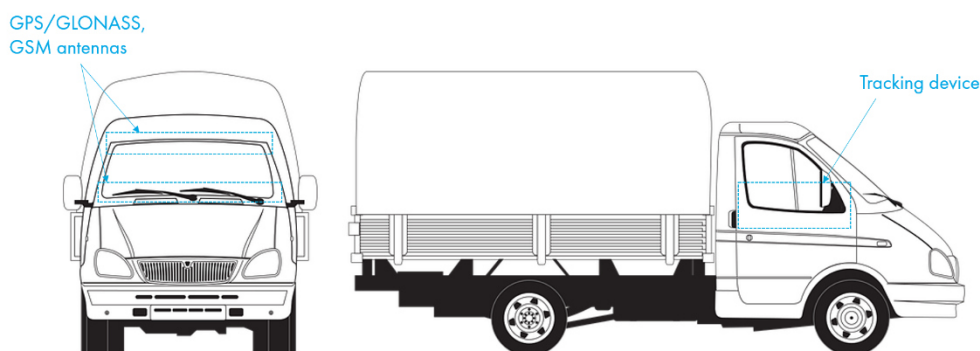
Blinking frequency, times	Description
2	Wi-Fi-unit is not connected to the access point or there is no client's connection.
1	Wi-Fi is connected to the access point and there is client's connection

Connecting to PC

In order to connect the tracking device to PC, use USB A – Mini-USB B.

Connecting to vehicle

The tracking devices are connected to the vehicle in accordance with the picture below. Details on device connection are described in the user manual "Installation and connection of Galileosky tracking devices" on our site (<https://galileosky.com/podderzhka/dokumentacziya.html>).



Operation of the Tracker's Units

Discrete-analog inputs (DAI)

To connect external sensors, the tracking device has 6 discrete-analog inputs which are pulse-frequency at the same time. Each input's function is set in the tracker's settings (sections Discrete-analog inputs setting and Inputs/outputs). In section Contacts description inputs are designated as IN0, IN1, IN2, IN3, IN4, IN5.

Each input saves its values to the nonvolatile memory, i.e. in case if the channel is set to be a pulse one, the pulse number value will be restored after resetting the device.

Feature	Value
Maximum measured voltage	33 V
Analog inputs resolution	1 mV
Maximum transmitted signal frequency	4 kHz

DAI have the following settings:

Parameter	Explanation
Filter type (input function)	0 - arithmetical average (discrete input state is also generated); 1 - pulse count; 2 - frequency input;
Filter length to calculate the mean value	The greater this parameter, the more slowly the device responds to the input signal change. With filter length equal to 1 - averaging does not happen. Set this parameter to 1 for frequency inputs. It is necessary to set this parameter to 1 for pulse inputs. If the tracking device counts extra pulses, the filter length should be increased by one and accuracy should be estimated.
Ranges for response/nonresponse areas (logical 1 and 0)	To process discrete signals, response/nonresponse range should be set where signals are equal to one and zero. Discrete inputs states should be seen in the Status of Inputs field, but not in the Input voltage field. While counting pulses or frequency, it is necessary to put the value equal to half the pulse value into all the fields of the given group (example: the pulses' amplitude is 5000 mV, so all the fields must take the value 2500 mV)

Pulse Count

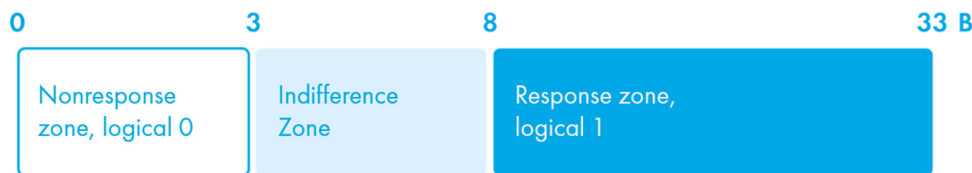
In case of a renewable counter the maximum pulse number can be 65535, after that the number is reset to zero.

If there is pulse at input, the correspondent bit will be set in the "Status of Inputs" field, and a point will be recorded. If there is no other pulse for 30 seconds, the bit returns to 0.

Mean Value and Discrete Event Generation

Example 1.

Let us consider the example with the following zero input setting (see the left-hand figure:
Filter type is 0;
Filter length is 5;
Logical one zone range is 8-33V;
Logical zero zone range is 0-3V.



Example 1



Example 2

The mean value is calculated continuously and is put into the corresponding field IN0.

At the same time, it is continuously checked whether the calculated value belongs to the given range.

If it is in the range 8-33V, the corresponding bit will find itself in the Status of Inputs field and a point will be recorded.

By value coming into the indifference zone (3V-8V), the former bit value will be saved to the Status of Inputs field.

If the value is in the logical zero zone (0V-3V), the corresponding bit in the Status of Inputs field is reset.

Thus, we can see that the given bit can change its state only in the logical one/logical zero zones.

Example 2.

In contrast to example 1 (see the right-hand figure) the logical one zone and the logical zero zone have changed places.

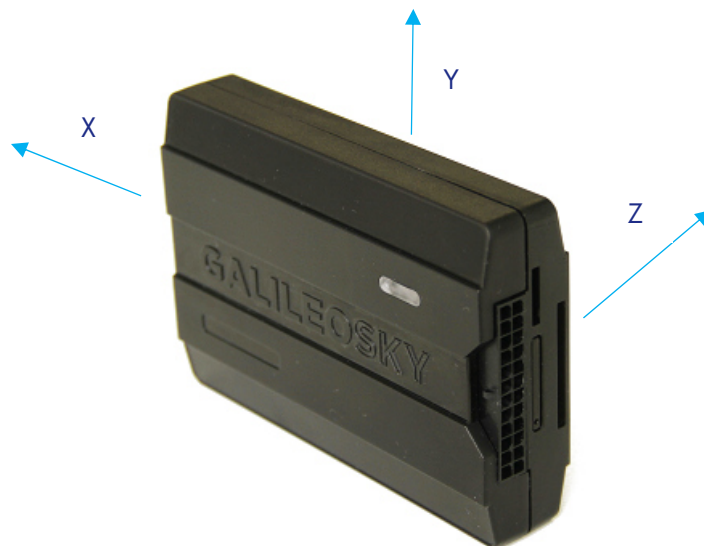
In the same way it is possible to set zones of response and non-response for the tracker`s power supply voltage (POWINCFG command, section [Analog-discrete inputs setting](#)). The state of discrete signal for input can be identified according to the 8th bit of the "Status of the device" field.

Frequency Count

To measure frequency in some sensors it is necessary to connect the sensor frequency output to the sensor positive power supply via a 1kOhm resistor. Otherwise, frequency count is impossible.

Determination of Strike and Incline

All devices can determine the tracker`s strike and incline.



Accelerometer axis directions:

To determine strike:

- Install the tracker so as one of the accelerometer axis looks vertically, it will exclude false detections on road bumps;
- Turn on strike and incline determination by SHOCK command (section [Track parameters setting](#)). For example, if Z axis is vertical: SHOCK 3,90,5,1200.

A strike is an acceleration increase in horizontal plane; the correspondent bit is put in the Device state field and strike coordinates are recorded.

To determine incline:

1. Install the tracking device in a vehicle;
2. By SHOCK command set maximum allowable incline angle and allowable time of this angle exceeding. For example, a maximum angle is 20°, allowable exceed time is 5 seconds; SHOCK 3,20,5,1200.

On the tracker homing position change in a vehicle, SHOCK command should be given to adopt the tracker to a new position.

Economical Driving "EcoDrive" and Determination of the Driving Style

The tracking device can detect rapid acceleration, braking, harsh turns and strikes on bumps. For correct operation of this function, the tracker must detect its orientation in space with respect to the vehicle (the direction to the ground).



If the tracking device cannot be installed as illustrated in the picture, user-defined installation may be performed with the subsequent calibration of orientation.

To determine the position of the tracking device in respect to the vehicle, perform the following steps:

1. install the tracker to ensure its rigid link with the vehicle's body;
2. ensure the horizontal position of the vehicle;
3. execute the shock 0 command, which determines the direction of the tracker to the ground.

Data on the driving style can be sent using the mainpackbit 174,1 command.

Data Archiving to the MicroSD Card

Can be applied only for modifications equipped with a microSD slot.

To create a backup on the microSD card it is necessary to insert it into the tracking device. The saved data will be ordered in the following way:

X:\Arc\
1.gsa
2.gsa
...
10.gsa

...

, where X is a disc name of microSD.

If there isn't enough space on the microSD card, the tracking device tries to delete the oldest files from the Arc folder. If it is needed, data for a specified period of time can be uploaded from the archive to the server by command `EFS DDMMYY,DDMMYY2`. See detailed information in EFS command description.

Autoinformers Function

Can be applied only for modifications equipped with a microSD slot and autoinformers output.

Autoinformers function may be used for automatic (without participation of the driver) public transport stops announcement with the use of a satellite navigation system.

The main difference from analogous systems is taking into account vehicle movement direction, thereby excluding false operation at other stops located in the same geographic area.

To use autoinformers:

1. Attach the speaker to the tracker (section [Connecting autoinformers speaker](#)).
2. Set the microSD card:
 - a. Place sound files in format: wav, 16 kHz, mono, 16 bit to the card root folder. The file name must not exceed 20 symbols, including the extension, for example, PARKOVIJ.wav. The record length is recommended within 4 minutes (in case of exceeding, by the following file reproduction crackle may appear);
 - b. Create folders with routes names in the card root folder. The smallest number of routes is 1.
 - c. It is necessary to place the BusLine.txt file to the route folders, where response areas and areas linkage to the sound files are stored.

The format of each zone is the following:

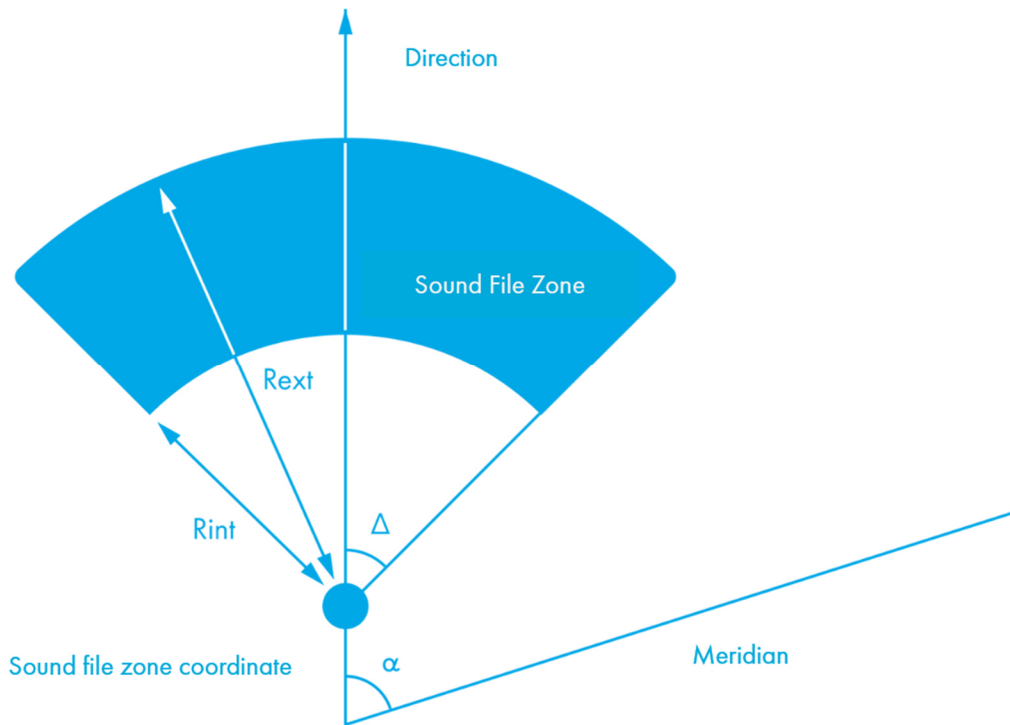
- Latitude;
- Longitude;
- Direction angle α (the angle between the meridian and a vehicle direction);
- Spread for the direction angle Δ (see the diagram below);
- Outer radius of Rext response zone;
- Inner radius of Rint response zone;
- Sound file name corresponding to this zone.

It is convenient to fill in the information for zones from the Device tab of the Configurator while going along the route.

By route forming it is necessary to indicate separate zones for stops in both directions even if the stops are opposite each other.

Latitude and longitude values are entered by means of the point "." (For example: 57.9842) where the value after the point – is degree fractions. To transfer minutes into degree fractions

(Xdegr.Ymin.) use the following expression $X_{\text{degr.}} = Y_{\text{min.}}/60$. For example: 57 degr. 55.4513min = 57.924188 degr.



1. Activate the Autoinform function with the Autoinform command (section [Autoinform setting](#)).
2. Insert a microSD card into the tracking device and reset it with the Reset command. After the tracker's resetting, the function will be activated.

In the process of sound files playback there is a 5 second pause between adjacent files.

To test sound files:

- 1) Unscrew GLONASS aerial from the tracking device;
- 2) Enter into file BusLine.txt the following lines:
[the following format:
LAT,LON,ANGL,DELTA,RAD_EXT,RAD_INT,STRING_STATION]
0.0;0.0;12.0;180;500;0;TEST.wav
- 3) Create *TEST.wav* file in the microSD card root. This file will be played again and again after the tracker's resetting.

Monitoring Data Transmission

Tracking device allows specifying the list of preferred GSM/3G-networks. The main priority is given to the networks from the beginning of the list. Each network is specified with country's code and network operator's code. Tracking device supports up to 30 networks (OPSO command, section [Data transmission settings](#)). If it is impossible to connect to one of the preferred networks, the tracker connects to any network but does not establish connection to the server, thus, voice communication and SMS will be available according to a service plan of the installed SIM-card.

The tracker allows data transmission to the main and backup monitoring servers. The tracking device accounts transmitted data separately for each server, thus, both will receive full archive with the track.

Data can be transmitted according to the Galileosky or EGTS protocol (Protocol command, section [Data transmission settings](#)).

By using the EGTS protocol the tracker's number parameter (ID command, section [Data transmission settings](#)) specifies the object number by the authentication.

By using the Galileosky protocol transmitted data can be coded; XTEA3 algorithm (<http://tomstdenis.tripod.com/xtea.pdf>) is used for coding. Commands, responses and photos are not coded. The data are archived in the internal flash-memory by default. During long periods without connection the oldest records of the internal flash-memory may be erased by the new ones. In this case, it is recommended to insert a microSD card for HARD 3G/HARD WI_FI modifications and to adjust archive transmission from it (Archive command, section [Service commands](#)).

Internal Archive Structure

The data archive can be stored on the internal flash memory or a micro-SD card. The internal flash memory card is used by default.

The tracker stores the data from all the inputs and interfaces, even when they have no connected sensors, in the internal flash memory archive.

By using the internal flash memory, it is possible to choose the order in which points are sent to the server.

By default, the data are saved in the depth of the data store, i.e. current data are saved before older data. Transfer in chronological order can be set by FLASHARCHIVE command. After changing the direction of memorizing data, the flash memory will be formatted, and all previously stored data will be lost.

By using a micro-SD card, the data are always sent in chronological order. Note that only current data are used for the first packet.

Operation with SIM-microchip

The tracking device has a slot for a SIM-card and a place for SIM-microchip sealing. Only SIM-card or SIM-microchip can be active and support the registration in GSM/3G-network at the same time. When the SIM-chip is installed, the second slot for SIM-cards (SIM1) becomes inactive. APN can be set for SIM-card and SIM-microchip. The tracker supports the following algorithm of SIM-card operation:

1. Only SIM0 card is always active.
2. Automatic switching to SIM-microchip or SIM1, if the data cannot be sent to the server within 9 minutes. Switching occurs in cycles, i.e. first SIM0 is used, then SIM1 or SIM-microchip and after that SIM0 again.
3. Switching between the SIM-cards and SIM-microchip according to the list of preferred GSM/3G-networks. If the tracking device detects the availability of one of the specified GSM/3G-networks, it switches to the corresponding SIM-card or SIM-microchip. If both networks specified for a SIM-card and SIM-microchip are available at the same time, the preference will be given to SIM0.
4. Always only SIM1 or SIM-microchip is activated.

The second algorithm is always used for remote firmware updating; the tracker attempts to get the connection to the server with firmware via SIM 0, and if it fails – via SIM1 or SIM-microchip.

GPRS Traffic Costs Optimization

GPRS-traffic costs decrease by online monitoring may be reached by following these steps:

1. Turn off the transmission of unused data, for example, temperature, acceleration, analog and digital inputs values which have no connected sensors. It can be made in the Configurator on Settings/Protocol tab or by MainPack and HeadPack commands (section [Server exchange protocol settings](#)).
2. Increase points record period. It can be made in the Configurator on Settings/Track tab or by WrPeriod command (section [Track parameters settings](#)).
3. Increase turning angle at which the device records a point, and distance at exceed of which the point is recorded. It can be made in the Configurator on Settings/Tracks tab or by Turning command (section [Track parameters settings](#)).
4. Find out the time of disconnection because of the tracker inactiveness from the server software developers. This parameter should be taken into account by points' record period setting otherwise the traffic will increase because of costs for restoring connection to the server. Example: points' record period at a stop is 1200 seconds (20 minutes), the server disconnection because of the tracker inactiveness is 180 seconds (3 minutes). The tracking device determines that a vehicle has stopped and switches on a timer for the next point record in 20 minutes, in 3 minutes the server disconnects as it hasn't received the data from the tracking device. The tracking device tries to reconnect the server at once. It happens 6 times, and only in 20 minutes the tracker sends the next point. As a result, traffic costs considerably exceed savings from points record interval increase.

5. Set filtering of coordinates at a stop so as the tracking device can correctly choose points' record period. The tracker can determine a stop according to several elements:
 - accelerometer data (AccSens command, section [Track parameters setting](#));
 - external supply voltage (MHours command, section [Track parameters setting](#));
 - ignition sensor indications (Ignition command, section [Track parameters setting](#)).

Remote Configuration

Remote configuration can be performed through several data transfer channels:

1. SMS. The tracking device has a list of 4 authorized phone numbers, the messages from which are treated as configuration commands. The available commands are described in the section [Settings for SMS control](#). A phone number can be added to the list of authorized numbers either through the Configurator, or by sending a message with AddPhone command (section [Settings for SMS control](#)).
2. GPRS. Commands can be sent from the monitoring data processing server. The format of the commands is described in the section [Galileosky protocol data](#).
3. GPRS. Commands can be sent via the Configurator and the remote configuration server of RSA "Galileosky", LLC. In this case, the tracking device supports two parallel connections: the first – with the monitoring data processing server, and the second – with the remote configuration server. Remote configuration can be enabled using RemoteConfig 1 command (section [Service commands](#)). It is possible to send commands to the tracking device, to receive current information from the sensors connected and to receive diagnostic messages, when working with the remote configuration server. Using the Configurator, it is possible to create a command pack to configure the tracker and to save it on the server. These commands will be sent to the tracker when it establishes the connection to the server.

Function of Signaling System

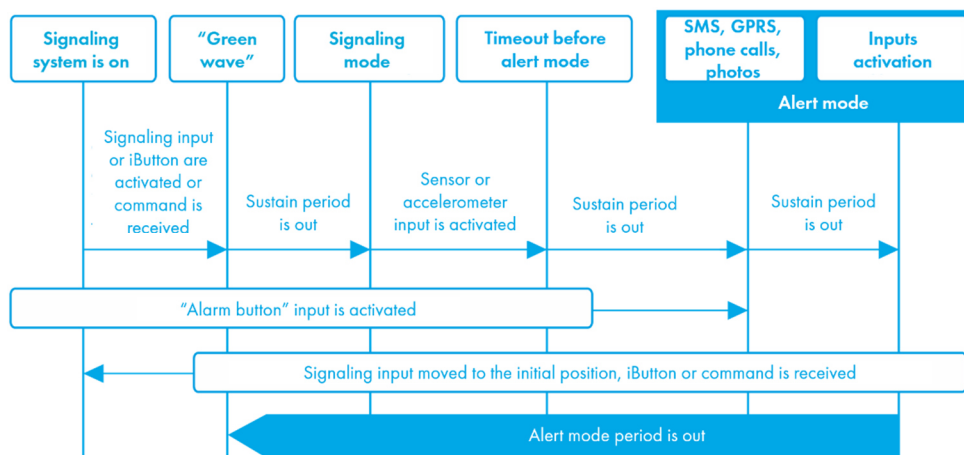
Function of signaling system allows to set reaction to:

1. Change of analog inputs state;
2. Strikes and inclines (accelerometer data);
3. Position change;
4. Overspeeding;
5. Connection of iButton or RFID-card.

Tracking units can react by inverting inputs state, impulsing outputs, SMS sending, making phone calls to the set phone numbers, photo making and coordinate recording.

Settings that can be changed by a user:

1. Time period after signaling system is launched during which no input signal will be processed ("Green wave");
2. Maximum time in alert mode after which the tracking unit will automatically move to signaling mode;
3. Individual for each input time period between activation and moving to alert mode;
4. Individual for each input text message which is sent via SMS when moving to alert mode;
5. Individual for each input time period between moving to alert mode and state changing.
6. Activation and deactivation of signaling system can be carried out by inputs, SMS or server command or iButton key, which should be set beforehand in the Configurator software (command iButton, paragraph [Digital inputs settings](#)). Commands have more priority than inputs state. Activation on inputs depends on the settings made by InCfg command, inverting level of inputs (see [Analog-discrete inputs setting](#)), which is set by Out command (see [Transistor outputs setting](#))



Connecting External Peripheral

CAN-interface

The tracker allows extracting information from the CAN-bus.

The following protocols are supported:

- J1939 (FMS). According to this protocol, the tracking device is not a device transmitting to CAN-bus, the device does not change vehicle operation, it also does not send confirmations to vehicle units packets and there is no electrical noise in the CAN-bus. In some cases, by connection to the troubleshooting socket for correct reading of information from the bus it is necessary to send confirmations to vehicle units packets, for this give ActiveCAN 1 command to the tracker (section [CAN settings](#)).
- J1979 (OBD II). This protocol works according to the question-answer mode, consequently, the tracker issues requests to the CAN-bus.

Available performance modes:

J1939_SCANNER – the bus scanner sending bus reports to the configurator.

FMS – a standard FMS protocol filter. (see www.bus-fms-standard.com).

J1939_USER_29bit – a configurable user filter. Identifier length is 29 bits.

J1939_USER_11bit – a configurable user filter. Identifier length is 11 bits.

J19379_SCANNER – the bus scanner defining bus speed and identifier capacity.

J1979_29bit – a standard J1979 protocol filter for 29 bits identifiers.

J1979_11bit – a standard J1979 protocol filter for 11 bits identifiers.

J1979_CHECK_PIDS – search of 11 and 29-bit identifiers J1979 protocol responded to requests.

J1939_SCANNER Mode

This mode is intended to study CAN-bus reports, according to J1939 protocol.

Bit rates from 10000 bit/s up to 500000 bit/s (typical values: 62500, 12500, 250000, 500000) are supported.

11 and 29 bit identifiers are supported.

The scanning mode works as follows:

1. The **CAN. Start scan.** message is displayed;
2. The CAN-bus reports are displayed with a delay indicated by the CAN Regime command. (section [CAN settings](#)).

29bit identifiers are displayed in the following format:

ID= 00000009 (8) 06 07 08 09 00 CC DD EE

Where:

ID - is a 29bit message identifier;

(8) - is the number of received bus bytes.

06 07 08 09 00 CC DD FF - is an 8byte message. (The lower byte is on the left, the higher byte is on the right),

11bit identifiers are displayed as

ID=009 (8) 06 07 08 09 00 CC DD EE

Where:

ID - is an 11bit message identifier;

(8) - is the number of received bus bytes;

06 07 08 09 00 CC DD EE is an 8byte message. (The lower byte on the left, the higher byte on the right).

3. After all the identifiers have been displayed, you can see the **CAN. End scan** message.
To enable this mode:

- 1) connect the tracker to the vehicle CAN-interface;
- 2) in the Configurator on Settings/CAN tab select bus rate and delay time (time of message waiting time);
- 3) click Start Scanning J1939. Received data are displayed in the right panel.

FMS Mode

This mode is activated in all tracking devices by default; it allows retrieving and decoding messages relevant to FMS protocol:

- total fuel consumption: the amount of fuel the vehicle had used since it was made;
- tank fuel level: measured in percent. 0%-empty, 100%- full;
- coolant temperature;
- engine speed;
- total mileage;
- operating hours;
- axis load.

ATTENTION! Many car manufacturers support FMS protocol partially or do not support it at all.

To enable this mode:

- 1) connect the tracker to the vehicle's CAN-interface;
- 2) give the CanRegime 2,250000,2000 command (section [CAN settings](#)) or select FMS filter type in the Configurator on Settings/CAN tab;
- 3) make sure that the device receives bus data and sends them to Device tab in the Configurator;
- 4) set data transmission to the server using the MainPack command (section [Server exchange protocol settings](#)) or in the Configurator on Settings/Protocol tab.

J1939_USER_29bit Mode

This mode enables us to receive 29bit identifiers (ID) messages from the vehicle CAN-bus, according to J1939 protocol.

To enable this mode:

- 1) connect the tracking device to the vehicle's CAN-interface;
- 2) select Custom filter (29bit identifiers) type in the Configurator on Settings/CAN tab, set the bus rate and delay time or give CanRegime command with necessary parameters (section [CAN settings](#));
- 3) set filters for CAN-bus messages.
- 4) set sending of received data to the server with the help of MainPack command (section [Server exchange protocol settings](#)) or in the Configurator on Settings/Protocol tab.

Notes:

- 1) In protocol of the first and the main packet of the tracker there are 1-byte, 2-bytes and 4-bytes tags for this mode operation, i.e. if the necessary ID needs only one byte from all data, better choose 1-byte tag.
- 2) Any of these tags can correspond to the right CAN message ID

ATTENTION! The data should be recorded in the decimal system in the tracking device. The hexadecimal notation is used for convenience only.

Let us consider an example:

The CAN message identifier is ID=0x18F00300.

We need only the first byte of all the sent content with this ID.

As we need only one byte, we shall choose the tag CAN_R0 as an example.

The command to set the tag is as follows: CAN8BITRO ID,Shift

- 1) The tag number ID=0x18FEEEE0 will look as 419360256 in the decimal system.
 - 2) The byte we need is shifted by one byte, i.e. the second parameter is equal to 1.
- So we have the following filter settings: CANBITRO 419360256, 1.

Now when this message is passing through the bus, the first effective load byte will automatically be placed to the tag R0 and sent to the server.

These settings are easier to make in the Configurator:

1. Scan the bus;

2. Indicate identifier in the first column;
3. Select the correspondent tag;
4. Visually indicate the shift using a mouse. The number, transmitted to the server, will be displayed in the Value column.

J1939_USER-11bit mode is set similarly.

J1979_SCANNER Mode

This mode is used to define data transfer rate and Identifier length according to J1979 protocol. If the parameters of transfer are known, it is recommended to use the **J1979_29bit** and **J1979_11bit** modes, having specified the necessary rate of the bus.

The rate of 250000 bits per second and 500000 bits per second and 11 and 29 bit identifiers are supported.

To enable this mode:

- 1) connect the tracker to the vehicle's CAN-interface;
- 2) press "Scan OBD II". Received data are displayed in the right panel.
- 3) if scanning is finished successfully, data transfer rate and Identifier length will be set automatically.

ATTENTION! Scanning can cause failures in on-board equipment operation. RSA "Galileosky", LLC bears no responsibility for any failures after CAN-bus scanning.

J1979_29bit Mode

This mode allows extracting and decoding the messages with 29 bit identifiers, transferred according to J1979 protocol automatically:

- tank fuel level: measured in percent. 0%-empty, 100%- full;
- coolant temperature;
- engine speed;
- errors codes.

ATTENTION! Many car manufacturers support J1979 partially or do not support it at all.

To enable this mode:

- 1) connect the tracker to the vehicle's CAN-interface;
- 2) give the CanRegime command (section [CAN settings](#)) or select OBD II 29bit filter type in the Configurator on Settings/CAN tab;
- 3) make sure the device receives bus data and sends them to Device tab in the Configurator;
- 4) set the received data transmission to the server using the MainPack command (section [Server exchange protocol settings](#)) or in the Configurator on Settings/Protocol tab.

J1979_11bit mode is set in a similar way.

ATTENTION! If your vehicle doesn't support J1939 protocol, J1979_29bit and J1979_11bit modes operation can cause failures of board equipment operation. RSA "Galileosky", LLC bears no responsibility for failures after activation of these modes.

J1979_USER_29bit Mode

The mode allows to receive messages from a CAN-bus of a vehicle with 29bit identifiers (ID) defined by the user, by J1979 protocol. The setting is similar to the mode J1939_USER_29bit.

Setting of *J1979_USER_11bit* mode is carried out in the same way.

J1979_CHECK_PIDS Mode

The mode allows to search for 11 bit and 29bit identifiers of J1979 protocol automatically. The tracking device sends requests to identifiers in the range 1...255, first to 11bit, then to 29bit in the same range. Identifiers that respond, will be displayed in diagnostics "CAN detailed". After scanning, CAN will be transferred to "CAN disabled" mode.

The order of procedures in this mode:

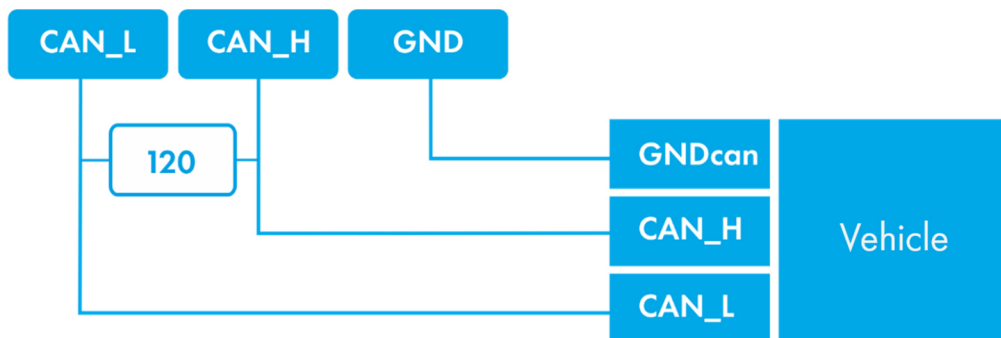
- 1) Connect the tracker to CAN-interface of a vehicle.
- 2) Send CanRegime command ([CAN settings](#)) with parameter Mode=8. In 5 seconds, the tracking device will start searching for identifiers.
- 3) Go to tab "Troubleshooting" and tick "CAN detailed" parameter to display the process of searching. In case the parameter is not ticked, or you go to another tab while scanning, data will not be saved.
- 4) «CAN mode: J1979. Searching PIDs...» message means that searching has started.
- 5) «CAN mode: J1979. Checking 11bit PIDs ...» message displays the results of search for 11bit identifiers. The tracking device will report on the current scanning process. In case of response by one of the identifiers, the message will be displayed.
- 6) «CAN mode: J1979. Checking 29bit PIDs ...» message displays the results of search for 29bit identifiers. The process is similar to the previous point.
- 7) «CAN mode: J1979. Search is finished» message means that the search is completed. CAN will automatically be transferred to the mode "CAN disabled".

ATTENTION! Many manufacturers of vehicles partially support J1979 protocol or do not support it at all.

ATTENTION! Activation of the mode in the vehicles with no support of J1979 protocol may lead to a failure in operation of onboard equipment. RSA "Galileosky", LLC bears no responsibility for failures after activation of these modes.

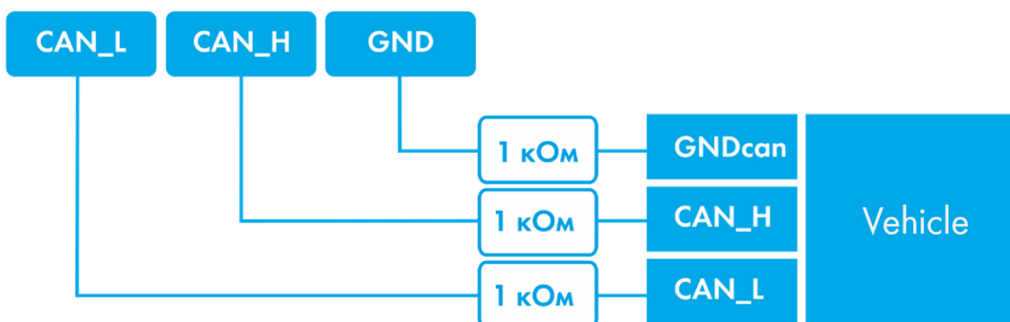
Different options of connection to the CAN-bus

1. Direct connection.



ATTENTION! If the terminating resistor (is shown with a dotted line in the diagram) is not installed on the vehicle side, it should be installed. Its presence can be checked with the help of a multimeter: it is necessary to measure the resistance between CAN_H and CAN_L when the vehicle electronics is off. If the resistance is about 60 Ohm, there is no need for a terminating resistor. If the resistance is 120 Ohm, it is necessary to connect a standard 120 Ohm resistor between the CAN_H and CAN_L wires.

2. Connection with current-limiting resistors



To plug the tracker into the troubleshooting socket it is necessary to use the first connection variant. The second variant is recommended only for use to connect the tracker directly to the vehicle's CAN-bus.

Connecting digital fuel sensors using RS232 protocol

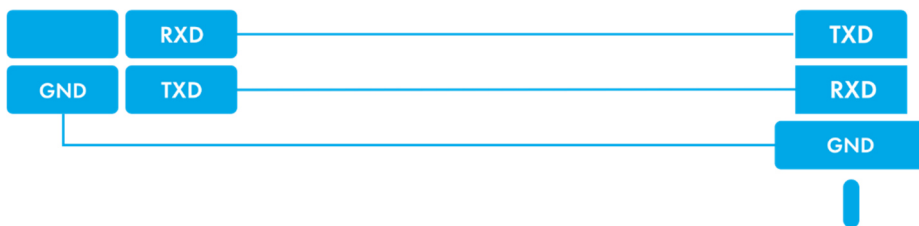
Can be applied only for modifications equipped with RS232 ports.

The order of connection:

1. Connect RXD, TXD and GND sensor contacts to tracker TXD, RTD and GND contacts (section [Contacts description](#)).

ATTENTION! The tracker and sensor grounds should be connected!

The sensor power supply is provided separately.



2. Set for the RS232 tracker channel an option to receive relative fuel level or frequency from the sensor. It can be done by sending RS2320 command (section [Digital inputs settings](#)) or through the Configurator on Settings/Digital inputs tab. RS232 tracker channel is set to receive relative fuel level by default.
3. If you need to filter bursts of fuel, adjust filter length by DFILTER command (section [Digital inputs settings](#)) or in the Configurator on Settings/Digital inputs tab. Temperature is saved only by archive dynamic structure activation (FlashArchive command, section [Service commands](#)).
4. Set transfer of received data to the server by MAINPACK command (section [Server exchange protocol settings](#)) or in the Configurator on Settings/Protocol tab. These data transmission is on by default.
5. Make sure that the tracking device receives data from the sensor. It may be done in the Configurator on Device tab.

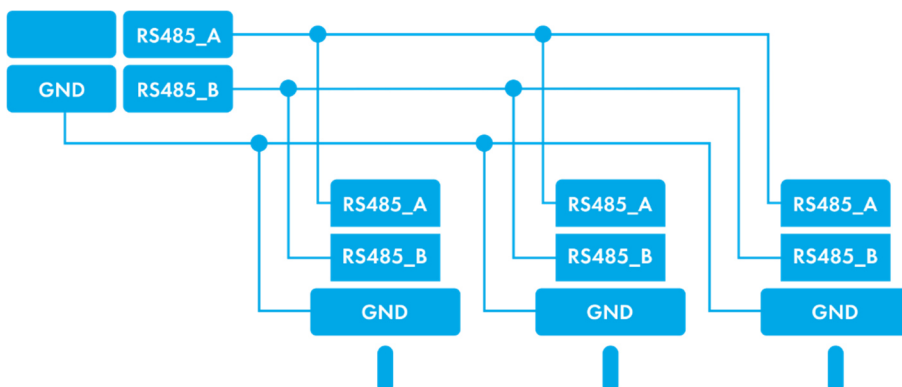
If the tracker receives no messages from the sensor for 18 seconds, the RS232 field value will come to zero. In this way, it is possible to detect sensor disconnection or failure.

Connecting digital fuel sensors using RS485 protocol

The order of connection:

1. Connect RS485_A; RS485_B, GND sensor contacts to tracking device RS485_A; RS485_B, and GND contacts (section [Contacts description](#)).

The sensor power supply is provided separately.



2. Set transfer of received data to the server by MAINPACK command (section [Server exchange protocol settings](#)) or in the Configurator on Settings/Protocol tab. These data transmission is on by default.

3. Make sure that the tracking device receives data from the sensor. It can be done in the Configurator on Device tab.

The tracker can support up to 16 sensors at a time. The sensors should have addresses from 0 to 15 correspondingly. If the tracker receives no messages from the sensor for 18 seconds, the tracking device will not receive messages from the sensor, the RS485 field value will be set to zero. In this way, it is possible to detect sensor disconnection or failure.

Connecting Galileosky photo camera to the device

Can be applied only for Galileosky cameras v3.0.3 and v3.1.0 with a sealed body.



Data transmission interface: RS232 or RS485

Wires (RS232):

1. Brown: +10/30V
2. Black: GND
3. Blue: TXD
4. White: RXD

Wires (RS485):

1. Brown: +10/30V
2. Black: GND
3. Blue: RS485_A
4. White: RS485_B

Camera's technical specifications:

- Dimensions: 54.0 x 38.0 x 21.0 mm
- Power supply: 10-30V;
- Average power consumption in standby mode: 0.17W;
- Average power consumption in shooting mode: 0.53W;
- Operating temperature range: -30...+60°C;
- Body material: plastic;
- Turn on time: less than 2 sec;
- Camera working mode indication.

Optical characteristics:

- Focal distance: 4mm;
- Angle of view: 64 degrees;
- Distortion: 0, 38%;
- Infrared filter: yes;
- Manual focusing: yes;
- Matrix diagonal: 1/4".

Picture characteristics:

- Color depth: 24bit;
- Picture format: JPEG;
- Picture resolution: 640x480 or 320x240 dots;
- Picture size: 6-65kB;
- Average picture size: 25kB;
- Time of one picture receiving: 2-10 s;
- Time of transmission to the server: more than 1 minute (depends on the picture size and GSM connection quality).

The order of connection cameras via RS232 interface:

1. The camera RXD, TXD, GND contacts should be connected to the device TXD, RXD, GND contacts (section [Contacts description](#)).

ATTENTION! The tracking device and the camera grounds should be connected! Camera has a separate power supply.

2. Insert a microSD card into the tracker slot.
3. Make the right settings of RS232 tracker port for operation with camera, you can use RS2320 or RS2321 command (section [Digital inputs settings](#)), or it can be done in the Configurator on Settings\Digital inputs tab.
4. Make sure that the tracking device operates with camera correctly, in the Configurator give "makephoto 1" command and switching to the Troubleshooting tab tick RS232 and RS232 detailed. When the tracking device receives a picture from the camera, there will be "RS232[0].cam. rx pic" message displayed. Green LED on the camera blinks rarely in standby mode and quickly during picture transfer.
5. Evaluate the quality of the picture in the configurator or eject the microSD card from the tracker and connect it to PC. Pictures from the camera connected to RS232 zero port are saved in the catalogue Pic\RS0, to the first port – Pic\RS1. A separate catalogue is created for each date, file names reflect the time when the shots were taken.
6. Reinsert the microSD card.

The order of connection cameras via RS485 interface:

1. Connect the RS485_A, RS485_B, GND camera contacts and the RS485_A, RS485_B, GND tracker contacts correspondingly (section [Contacts description](#)).

ATTENTION! The tracking device and the camera grounds should be connected!

Camera has separate power supply.

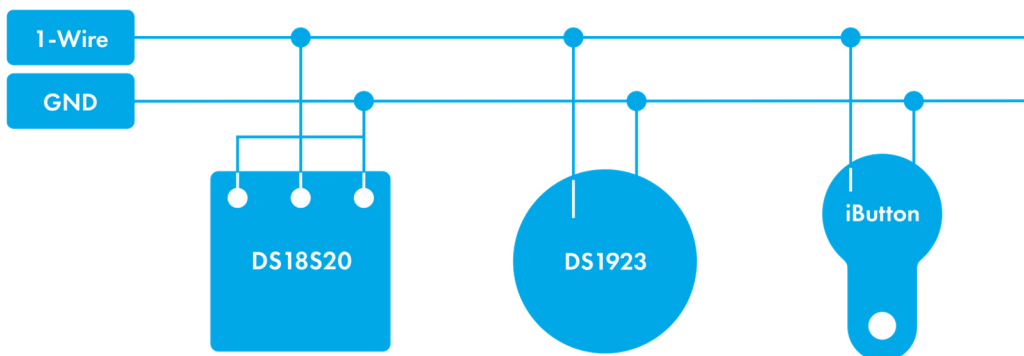
2. Insert a microSD card into the tracker slot.

3. Make the right settings of RS485 tracker port for operation with cameras and fuel level sensors, use RS485FN 2 command (section [Digital inputs settings](#)) or the Configurator on Settings\Digital inputs tab.
4. Reset the tracking device.
5. Make sure that the tracking device operates correctly with the camera. For this, give the "makephoto 2" command in the Configurator and, after switching to the Troubleshooting tab, tick RS485. When the tracking device receives a picture from the camera, the Troubleshooting will display RS485[0].cam. rx pic. message. Green LED on the camera blinks rarely in standby mode and quickly during picture transfer.
6. Evaluate the quality of the picture in the Configurator or eject the microSD card from the tracker and connect it to PC. Pictures from the camera are saved in the catalogue Pic\RS4850. A separate catalogue is created for each date; file names reflect the time when the shots were taken.
7. Reinsert the microSD card.

Connecting 1Wire sensors

Can be applied only for modifications equipped with 1-Wire interface.

It is possible to connect different sensors working via 1-Wire interface, and they can operate simultaneously.



Connecting iButton (DS1990, DS1982) identification key

There are several identification key (IK) applications:

- driver identification;
- trailer detachment identification;
- doors opening identification.

In the same way, it is possible to connect devices emulating iButton, for example, RFID-codes readers.

The tracking device can support up to 8 identification keys with certain identifiers or two identification keys with any identifier. When using a microSD card up to 1000 IK with certain identifier are supported.

By identification key applying to 1-Wire and GND contacts ([Contacts description](#)) the key number is entered into the memory, the point is recorded, and four lower bytes are sent to the server without checksum. By key disconnection, the number turns to zero, the point is recorded, and message is sent to the server. Keys having code less than 100000 are stored

in iButton[1] field. By iButton detachment from the tracking device, key value is set to zero in the memory cell in 4 seconds, message with the zero code is transmitted to the server. For keys with the code less than 100000, timeout from detachment to setting to zero of the memory cell is 25 minutes. Timeout for setting to zero can be set by IBCFG command (section [Digital inputs setting](#)) or in the Configurator on «Settings»\«Digital inputs» tab.

Eight key identifiers can be set using iButtons command (section [Digital inputs setting](#)) or in the Configurator on Settings\Digital inputs tab. You should enter 4 lower bytes of iButton key number without checksum, in hexadecimal system.

For example, full key hexadecimal number:

09 91 02 0C 00 00 00 5C, where

09 – type of device (in this case, it is DS1982, for DS1990 – 01),

91 02 0C 00 00 00– unique number,

5C – the checksum.

In this case, 91 02 0C 00 must be entered.

By identification key applying with one of the certain identifiers, a correspondent bit will be set in iButton connection status field. You may control it on the Device tab in the Configurator.

By using a microSD card, you may edit a list of trusted keys with the help of the AddKey, DelKey commands (section [Digital inputs settings](#)). You can also connect the card to the computer and edit the list in the Configurator on the Trusted iButton keys tab. In case of connection of one of the enlisted IK, a correspondent bit will be set in the Device Status field.

Connecting DS18S20 (DS1820, DS18B20) thermometers and DS1923 temperature and humidity sensors

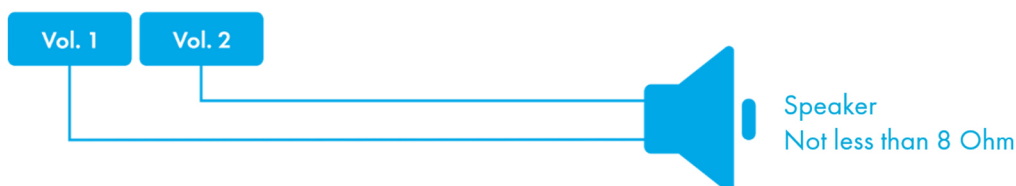
It is possible to connect up to 8 DS18S20 thermometers and 8 DS1923 sensors. To use the sensors connect them to 1-Wire and GND contacts ([Contacts description](#)) and activate the corresponding protocol items ([Server exchange protocol settings](#)). There is no any linkage between a thermometer or humidity sensor and a certain tag cell in the protocol. All data are stored in memory cells in a definite order: from a lower tag to a higher tag. If the number of cells exceeds the number of thermometers of one type, the extra higher cells will contain the data which correspond to disconnected sensor state.

By temperature sensor turning off the thermometer field shows disconnection (-128°C).

By humidity sensor turning off the humidity field shows disconnection (0%).

Connecting Autoinformer speaker

Can be applied only for modifications equipped with autoinformer contacts.

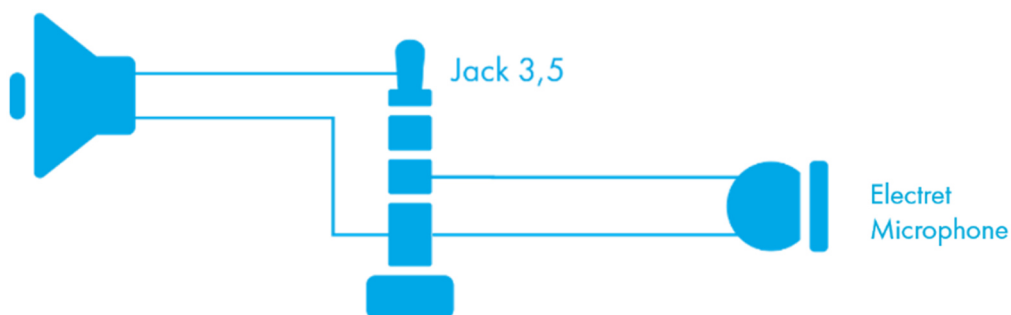


Connecting audio equipment

Can be applied only for modifications equipped with voice communication connector.

A push-to-talk can be connected directly to the tracking device from radio handheld transceivers VX-1R/VX-5R/VX-7R. For working with push-to-talk, it is needed to run command "Tangenta 1" or to set this parameter in Configurator. If you are using push-to-talk at the moment of incoming call, you may answer by pressing a push-to-talk button shortly.

Jack 3,5 Stereo or Jack 3,5 Mono connector can be used to connect the speaker separately. A speaker and a microphone can be connected simultaneously through a splitter. Telephone headset with corresponding contacts location can be connected.



Microphone specifications:

Parameter	Minimum value	Mean value	Maximum value
Operating voltage, V		1.60	2.2
Operating current, uA	70		300
Load resistance, kOhm	1.2	2.2	

Speaker specifications

Parameter	Minimum value	Mean value	Maximum value
Connected speaker resistance, Ohm	8		
Operating current, mA			+250
Power with a 32Ohm speaker, mW		250	

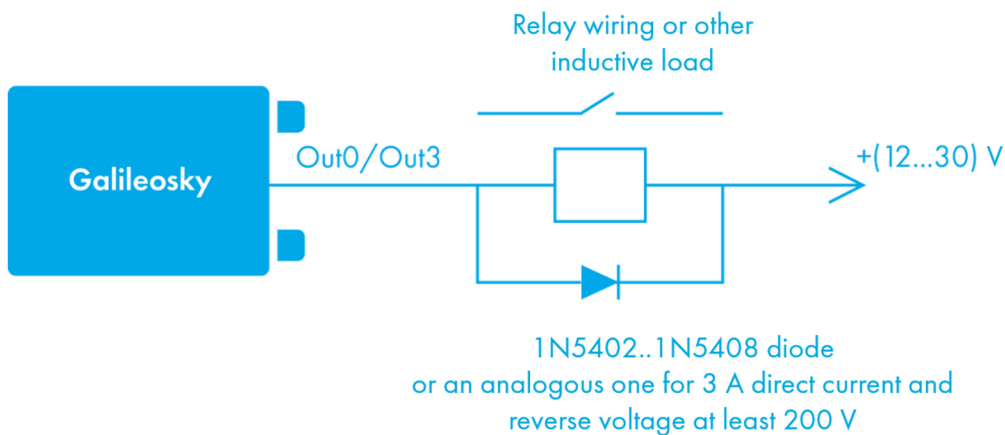
Transistor outputs (0/1)

To operate external devices there are 4 discrete «open collector» outputs (section [Contacts description](#)) in the tracking device. The maximum output voltage is +30V, each output current is no more than 80mA.

The tracker outputs values are stored in the nonvolatile memory, so the device sets these stored values even after being reset.

To operate outputs, use Out command (section [Transistor outputs settings](#)) or the Settings/Inputs/Outputs tab in the Configurator.

OUT0...OUT3 outputs relay connection circuit



Connecting Garmin navigators supporting FMI protocol

Can be applied only for modifications equipped with RS232 interface

The tracking device can serve as a gateway for Garmin FMI protocol packets transmission to the server and back. Garmin FMI protocol enables:

- drivers identification by code numbers (driver enters his/her number into a navigator, the number is transmitted to the server);
- driver status transmission to the server (driver selects his/her status on a navigator display);
- text messages exchange between Garmin navigator and the server;
- transmission of route end points from the server to the navigator (in this case, the navigator calculates optimal path to the set points and displays it on the map);
- control for speeding and informing the server about it;
- geofences transmission from the server to the navigator and displaying them.

A description of protocol abilities can be found on

<http://www8.garmin.com/solutions/pnd>.

The tracker only transmits the packets from the navigator to the server and back, so parsing the packets should be done at the server.

To connect Garmin navigator:

1. Purchase an interface Garmin FMI cable (for example, Garmin FMI 10), cable is to be chosen according to the navigator model. The cable has a mini-USB socket to connect to the navigator at one end, and supply and RS232 interface contacts at another end.
2. Connect RS232 interface contacts to the tracker RS232 zero port; connect RX contact of the cable to the TXD contact of the tracker; TX contact of the cable to the RXD contact of the tracking device; be sure to connect GND RS232 contact of the cable to the GND contact of the tracking device.
3. Connect cable power supply.
4. Connect the cable to the navigator.
5. Configure RS232 port in the tracker to work with the navigator. It can be done by RS2320 5 command or in the Configurator on Settings\Digital inputs tab.

To make sure that the tracking device and the navigator connection works properly select messages from necessary RS232 port in troubleshooting. If the connection is correct, the following messages will be displayed regularly:

RS2320. Garmin FMI. Enable FMI.

RS2320. Garmin FMI. ACK.

If the connection is right, the navigator interface will change, the left-hand icon will take the form of a truck, it will give an access to messages sending and receiving functions.

Connecting REP-500 electrical meter

Can be applied only for modifications equipped with RS232 interface

The REP-500 is an electrical meter, which can be connected to the tracking device via RS232 interface. To connect the REP-500, perform the following steps:

1. Connect RXD, GND contacts of the tracker to TX, Ground contacts of the REP-500 correspondingly.
2. Configure the RS232 port in the tracking device for operation with the meter. This can be performed using the RS2320 10 command or in the Configurator on the Settings\Digital inputs tab.
3. Set the meter readings transfer to the server with the help of MainPackBit 171,1 command.

Connecting CAN-LOG

Can be applied only for modifications equipped with RS232 interface.

The CAN-LOG device is designed for CAN-bus data reading. It allows to get the data on:

- total time of engine operation;
- total mileage of a vehicle;
- whole fuel consumption of a vehicle since the date of the vehicle`s creation;
- fuel level in % or liters;
- engine speed;
- coolant temperature;
- vehicle speed;
- axle load.

The following prefixes are deciphered automatically: A, B, C, D, E, F, G, R, H, I, J, K, L, M, N, O, S, P, WA.

If the tracking device detected one of known prefixes, the following decipher stops. Thus, its value will not be in the list of user prefixes.

The CAN-LOG support was added to secure compatibility with the installed board equipment. By initial installation it is recommended to use the device built-in functions for CAN-bus operation (section [CAN-interface](#)). Advantages of using built-in functions of the device:

- no extra costs;
- a possibility to scan the CAN-bus;
- a possibility to read all CAN-bus data, and not just those listed for the CAN-LOG.

To connect the CAN-LOG you have to:

1. Connect RXD, TXD, GND contacts of the tracking device and RS232 TX, RS232 RX, CAN-LOG's mass correspondingly.

2. Configure RS232 port in the tracker for operation with CAN-LOG. It can be done by RS2320 6 command or in the Configurator on Settings\Digital inputs tab.
3. Disconnect the tracker built-in functions for operation with CAN-bus. It can be done by CANREGIME 0,250000,2000 command or in the Configurator on Settings\CAN tab.
4. Specify the parameters transferred to the server. HEADPACK or MAINPACK commands can also be used (section [Server exchange protocol settings](#)) or in the Configurator on Settings/Track tab.

Connecting CUB5B indicator

Can be applied only for modifications equipped with RS232 interface.

The CUB5B indicator is a segment 8-bit indicator, which can be connected to the tracking device using RS232 interface. It can display current sensors data, CAN-bus data, mileage and so on. Information updates every second.

Connection:

1. If the indicator was set to operate with other equipment, it is necessary to reset to factory settings. If the indicator is new, it is unnecessary.
2. Connect RXD, TXD, GND tracker contacts and TX, RX and Ground contacts of the CUB5B correspondingly.
3. Configure RS232 port in the tracking device for operation with indicator, it can be done by RS2320 7 command or in the Configurator on Settings\Digital inputs tab.
4. Choose the displayed parameter, it can be done by CUB5 command or in the Configurator on Settings\Digital inputs tab.

Connecting CI5010A weight indicator

Can be applied only for modifications equipped with RS232 interface.

The CI-5010A weight indicator is designed to measure, control and indicate electrical signals produced by weight measuring strain gages sensors. It can be connected to the tracking device via RS232 interface.

The order of CI-5010A connection:

1. Adjust the indicator to output the measured value constantly.
2. Connect RXD, TXD, GND contacts of the tracker and TX, RX, Ground of CI-5010A correspondingly.
3. Configure the RS232 port in the tracker to operate with the indicator. It can be done by the RS2320 12 command or in the Configurator on Settings\Digital inputs tab.
4. Set «RS232» tag for sending to the server;
5. If possible, measured weight exceeds the interval [0, 65535], turn on the dynamic archive and set «Extended RS232 data» tag sending.

The data from the indicator are rounded up to a whole number. Measured weight is transmitted in two tags: «RS232» and «Extended RS232 data». If measured weight is within the interval from 0 to 65535 kg, it is transmitted only in «RS232» tag, weight is calculated in a different manner according to a formula «RS232»+65535x«Extended RS232 data».

Signed number is transmitted in «Extended RS232 data» tag, thus, it is possible to receive both positive and negative weight.

Connecting Tenzo-M weight indicator

Can be applied only for modifications equipped with RS232 interface.

The Tenzo-M weight indicator is designed to measure, control and indicate electrical signals produced by weight measuring strain gages sensors. It can be connected to the tracking device via RS232 interface.

The order of Tenzo-M connection:

1. Adjust the indicator to output the measured value constantly. Port speed is 2400 bit/s.
2. Connect RXD, TXD, GND contacts of the tracking device and TX, RX, Ground of Tenzo-M correspondingly.
3. Configure the RS232 port in the tracking device to operate with the indicator. It can be done by the RS2320 16 command or in the Configurator on Settings\Digital inputs tab.
4. Set «RS232» tag for sending to the server;
5. If possible, measured weight exceeds the interval [0, 65535], turn on the dynamic archive and set «Extended RS232 data» tag sending.

The data from the indicator are rounded up to a whole number. Measured weight is transmitted in two tags: «RS232» and «Extended RS232 data». If measured weight is within the interval from 0 to 65535 kg, it is transmitted only in «RS232» tag, weight is calculated in a different manner according to a formula «RS232»+65535x«Extended RS232 data». Signed number is transmitted in «Extended RS232 data» tag, thus, it is possible to receive both positive and negative weight.

Connecting AWT 640 weight indicator

Can be applied only for modifications equipped with RS232 interface.

The AWT 640 weight indicator is designed to measure, control and indicate electrical signals produced by weight measuring strain gages sensors. It can be connected to the tracker via RS232 interface.

The order of AWT 640 connection:

1. Adjust the indicator to output the measured value constantly. Port speed is 9600 bit/s.
2. Connect RXD, TXD, GND contacts of the tracking device and TX, RX, Ground of AWT 640 correspondingly.
3. Configure the RS232 port in the tracker to operate with the indicator. It can be done by the RS2320 18 command or in the Configurator on Settings\Digital inputs tab.
4. Set «RS232» tag for sending to the server;
5. If possible, measured weight exceeds the interval [0, 65535], turn on the dynamic archive and set «Extended RS232 data» tag sending.

The data from the indicator are rounded up to a whole number. By receiving the message about the changed weight from the indicator, the tracking device records a point and sends

it to the server. Measured weight is transmitted in two tags: «RS232» and «Extended RS232 data». If measured weight is within the interval from 0 to 65535 kg, it is transmitted only in «RS232» tag, weight is calculated in a different manner according to a formula «RS232»+65535×«Extended RS232 data». Signed number is transmitted in «Extended RS232 data» tag, thus, it is possible to receive both positive and negative weight.

Connecting WIN SCALE weight indicator

Can be applied only for modifications equipped with RS232 interface.

The Dinamica Generale S.p.A. WIN SCALE weight indicator is designed to measure, control and indicate electrical signals produced by weight measuring strain gages sensors. It can be connected to the tracking device via RS232 interface.

The order of WIN SCALE connection:

1. Adjust the indicator to output the measured value constantly. Port speed is 9600 bit/s.
2. Connect RXD1, TXD1, GND contacts of the tracking device and TX, RX, Ground of WIN SCALE correspondingly.
3. Configure the RS232 port in the tracking device to operate with the indicator. It can be done by the RS2320 19 command or in the Configurator on Settings\Digital inputs tab.

The data from the indicator are rounded up to a whole number. By receiving the message about the changed weight from the indicator, the tracking device records a point and sends it to the server. If measured weight is within the interval from 0 to 65535 kg, it is transmitted only in «RS232» tag, weight is calculated in a different manner according to a formula «RS232»+65535×«Extended RS232 data». Signed number is transmitted in «Extended RS232 data» tag, thus, it is possible to receive both positive and negative weight.

Connecting devices operating via WIEGAND26 protocol

To connect the devices operating via WIEGAND26 protocol:

1. Connect In0, In1, GND contacts of the tracker with Data0, Data1, GND of the device correspondingly.
2. Set analog inputs of the tracking device for operation with device via WIEGAND26 protocol. It can be set by commands InCfg0 4, InCfg1 5 or in Configurator program, tab "Settings"/"Digital inputs".

The values received from the device will be stored in iButton[1]. Every 4 seconds the values will reset.

Connecting Matrix 5 RFID-codes reader via RS485 interface

The order of Matrix5 connection:

1. Connect the RS485A, RS485B, GND contacts of the tracker and the RS485A, RS485B, GND of the Matrix5 correspondingly.
2. Configure the RS485 port in the tracking device to operate with the reader. It can be done by the RS485FN 1 command or in the Configurator on Settings\Digital inputs tab.
3. Reset the tracker.

The values received from the device will be stored in iButton[1].

Connecting DBG-S11D dosimeter via RS485 interface

DBG-S11D dosimeter is intended for continuous measuring ambient equivalent dose rate (ADER). The tracking device enables to receive the current ADER readings in 3V/h and data on dosimeter state. Then this information will be sent to the server. One dosimeter operation is supported. The dosimeter can be connected simultaneously with fuel sensors and Galileosky photo camera.

The order of DBG-S11D dosimeter connection:

1. Connect the RS485A, RS485B, GND contacts of the tracker and the RS485A (contact 1), RS485B (contacts 2), GND (contact 6) of the dosimeter correspondingly. Dosimeter has separate power supply.
2. Configure the RS485 port in the tracker to operate with fuel level sensors, photo cameras and dosimeter. It can be done by the RS485FN 2 command or in the Configurator on Settings\Digital inputs tab.
3. Specify dosimeter data in the transmission protocol to the server. If dosimeter data sending is off, the tracking device will not sample DBG-S11D.

Connecting PressurePro tires pressure monitoring system

Can be applied only for modifications equipped with RS232 interface.

PressurePro tires pressure monitoring system enables to carry out continuous control of pressure in tires and tire temperature and warns about critical situations. The system consists of wireless pressure sensors, installed on tires, and monitor, receiving data from sensors. The tracking device connects to PressurePro monitor via RS232 interface and receives data about sensors state and measured parameters.

Connecting PressurePro:

1. Connect RXD, TXD, GND contacts of the tracker and TXD (white), RXD (green), GND (black) contacts of monitor correspondingly. Monitor has separate power supply.
2. Configure the RS232 port in the tracking device to operate with PressurePro. It can be performed by the RS2320 13 command or in the Configurator on Settings\Digital inputs tab.
3. Specify PressurePro data in the transmission protocol to the server.

By default, PressurePro sensors transmit data once in 5 minutes or by emergency arising (tripping sensors, pressure reduction and etc.). The tracking device transmits PressurePro data to the server by analogy: once in 5 minutes or by emergency arising, data are not transmitted at passing points to save GPRS-traffic. Operation of up to 34 sensors is supported.

Connecting CarrierDataCOLD500, ThermoKing, Euroscan refrigeration units temperature recorders

Can be applied only for modifications equipped with RS232 interface.

Temperature recorders allow transmitting the information about the refrigerator state to the tracking device, which, in its turn, sends to the server the following transformed data:

1. operation mode of refrigeration unit;
2. cargo temperature (for one- and multi temperature units);
3. alarm signals;
4. total time of engine operation.

Connecting a temperature recorder:

1. Connect RXD, TXD, GND contacts of the tracking device and TXD, RXD, GND contacts of temperature recorder correspondingly. Temperature recorder has separate power supply.
2. Configure the RS232 port in the tracker to operate with one of temperature recorder types. It can be performed by the RS2320 command (DATACOLD500: RS2320 11, ThermoKing: RS2320 14, EuroScan: RS2320 15) or in the Configurator on Settings\Digital inputs tab.
3. Specify temperature recorder data in the transmission protocol to the server.

Configurator

5

Configurator is a PC program, which allows:

- configuring the tracker via graphic interface and with the help of commands;
- troubleshooting the tracking device saving the results in a log-file;
- seeing the tracker units state in real time mode;
- downloading monitoring data from the internal memory and a SD card;
- sending the downloaded data to the server;
- specifying areas for autoinformers.

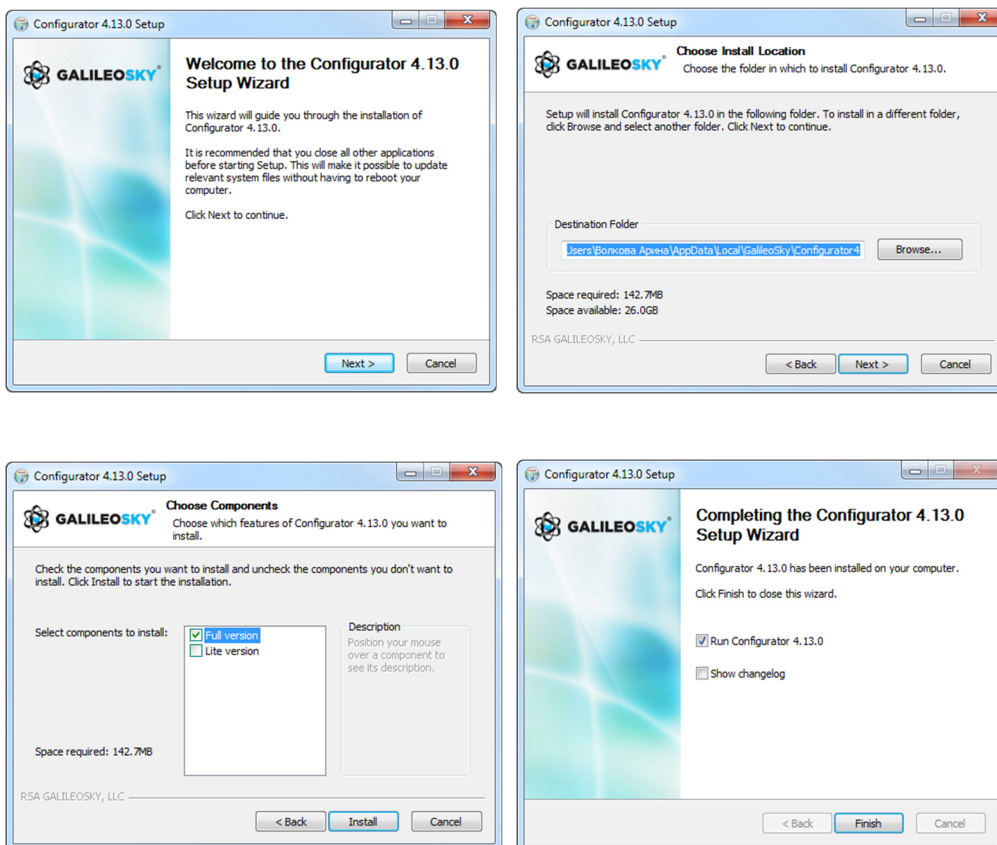
32 and 64 bit OS are supported: Windows 7, Windows 8, Windows 10.

ATTENTION! Program installation may require changes of crucial OS elements. Do not let your antivirus program block the installer operation.

Launching the Software

Download the Configurator program from the [site](#) and launch it.

In case of a security system warning, confirm launching the program.



During the installation of the Configurator old drivers will be deleted and new ones will be installed. It is possible to install the major version of the Configurator or a limited one. The latter one allows uploading archive and receiving the current parameters of sensors, but not changing the settings.

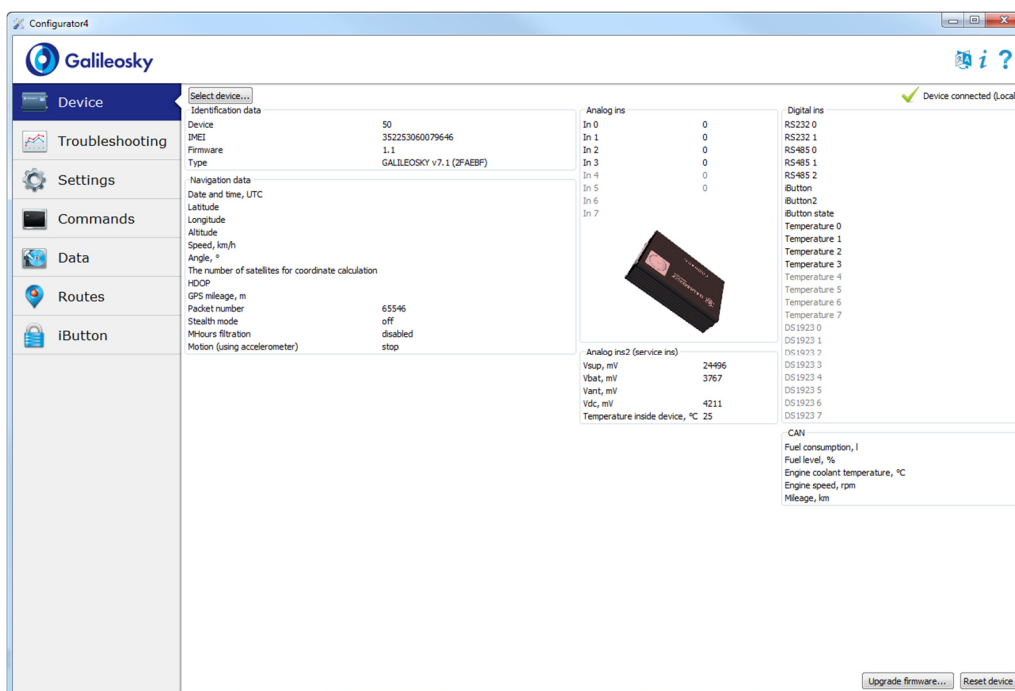
Start the Configurator program (from Start menu\Programs\Galileosky\Configurator4).

Turn on the power of the tracker and connect it to the computer via a USB-cable.

After the tracker connection the program loads all the device`s settings parameters automatically. If the program identifies the tracker, all the buttons on the vertical left-hand panel will be active.

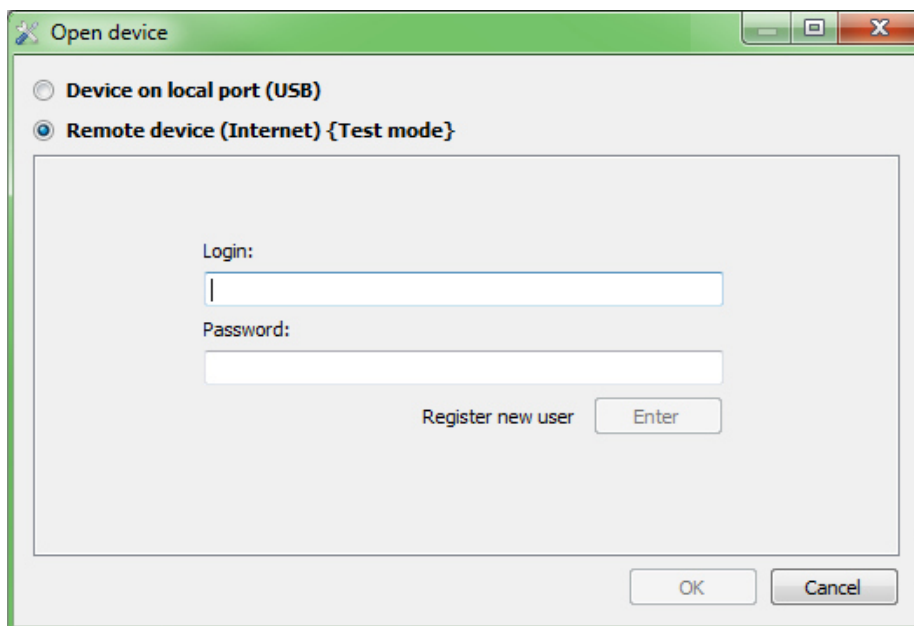
Device tab

The tab displays the information about the tracker state and allows its resetting. This tab contains the tracker model, oriented in space according to accelerometer indications. The model can be rotated by mouse. Parameter values, which are beyond the limits, wrong coordinates, exceeding of maximum incline angle and responses on inputs are shown in red.

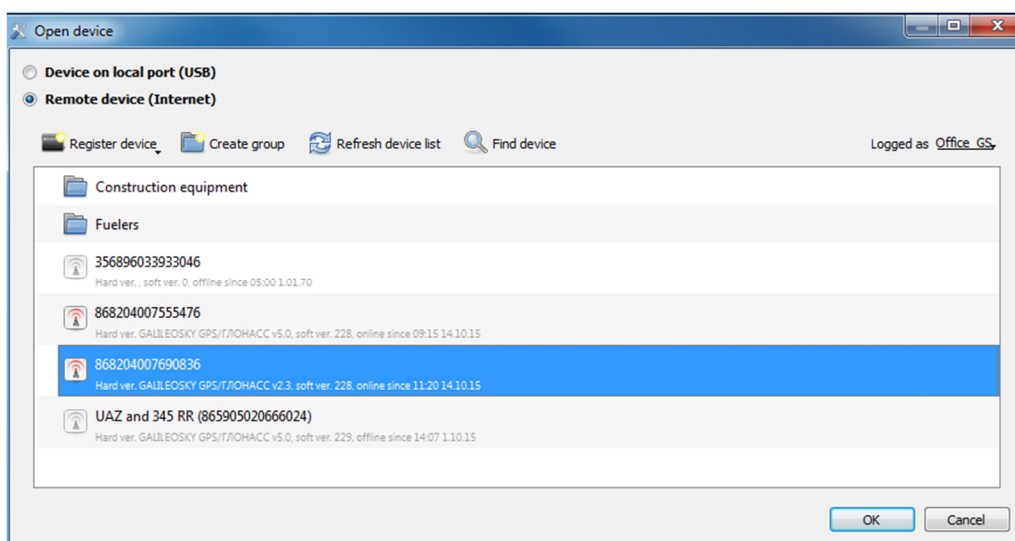


If there is a PIN code in the tracker, the program will request it to access the settings. By wrong code entering the tracking device will disconnect from the computer, reset, connect to the Configurator again and wait for the right code enter.

For remote configuration and troubleshooting of the tracker, click Select device... button. In the window appeared, enter your login and password to get the access to the remote configuration server. You can get the login and the password in RSA "Galileosky", LLC. department of technical support or by clicking the Register new user button.



After successful authorization on the server, the form of devices list management will become available. When connecting for the first time, the list of the controlled tracking devices will be empty. To add a tracker to the list, click "Register device" button. During registration the Configurator will request a password for a particular tracker, by-default password corresponds to IMEI of the tracking device; this can be later changed in the Configurator by the user. Trackers may be grouped.



After selecting a particular tracking device, it can be controlled via the Configurator, the same way as it occurs with the USB-connection.

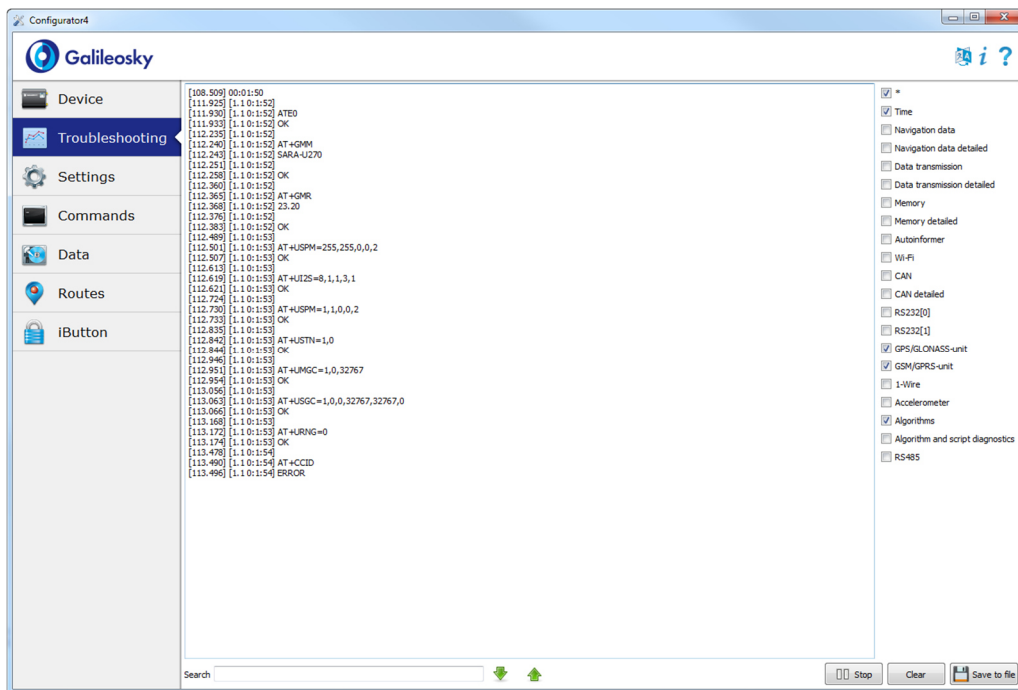
Troubleshooting tab

This tab allows us to see the current device state through the troubleshooting reports.

The troubleshooting mode has the following buttons:

- 1) **Start /Stop**
The time scale displays the information about the server connection, packet recording, updating coordinates etc. and with a 10 sec interval.
- 2) **Clear troubleshooting window**
- 3) **Save** the tracker`s troubleshooting results as a log-file which can be opened by any text editor.
- 4) **Search** in the troubleshooting history file.

GSM/3G-unit debug info



Command mode tab

This tab is intended to message a single command or a set of commands to the tracking device.

The command mode has the following buttons:

- 1) Run commands;
- 2) Run single command;
- 3) Open from file;
- 4) Save to file.

The commands will be identified whether you use capital or lower-case letters or both in turn.

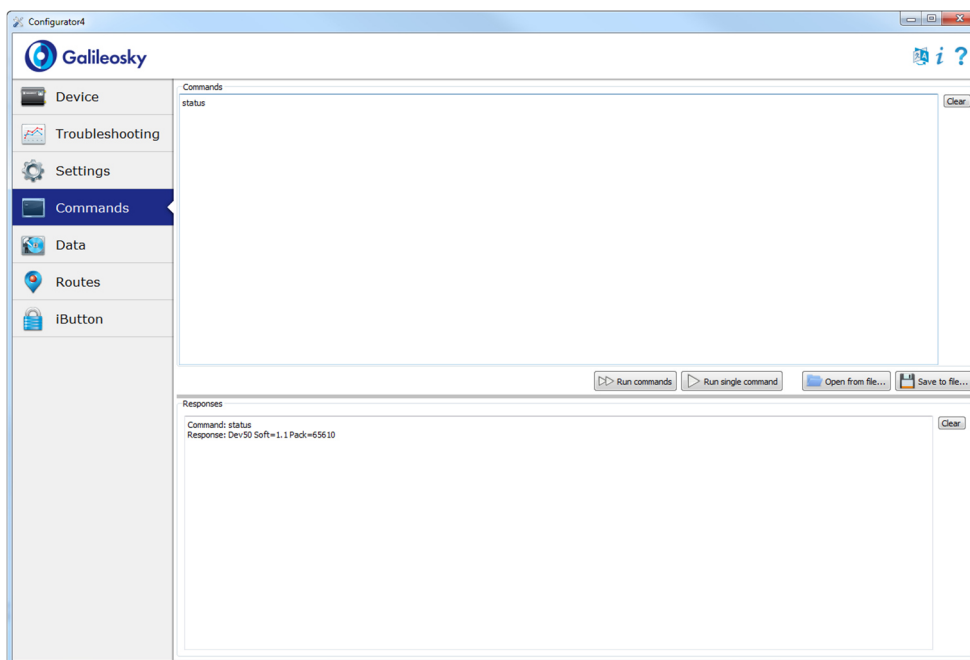
ATTENTION!

There are no spaces in command name!

Spaces between parameters are not allowed!

Commands and parameters are separated by space.

Commands are separated by Enter.



Single command example

An example of a command with a parameter:

Enter APN internet.beeline.ru,beeline,beeline as shown in the figure above and press **Run single command** button. The command and a response will be displayed in the Responses window.

Command: APN internet.beeline.ru,beeline,beeline

To access the parameters in the device memory, you should use a command without parameters!

Response: GPRS: APN=INTERNET.BEELINE.RU, user=BEELINE, pass=BEELINE

An example of a command without a parameter:

APN command	Request: APN Response: GPRS:APN=INTERNET.BEELINE.RU,user=BEELINE,pass=BEELINE
----------------	---

Set of commands example

Enter the necessary commands in Commands window, each beginning a new line, as shown in the figure below and press the **Run commands** button.

Example: Serverip 55,34,76,123,30100

ID 6299

HeadPack 1110

The given commands and results will be displayed in the Responses window.

Command: Serverip 55,34,76,123,30100

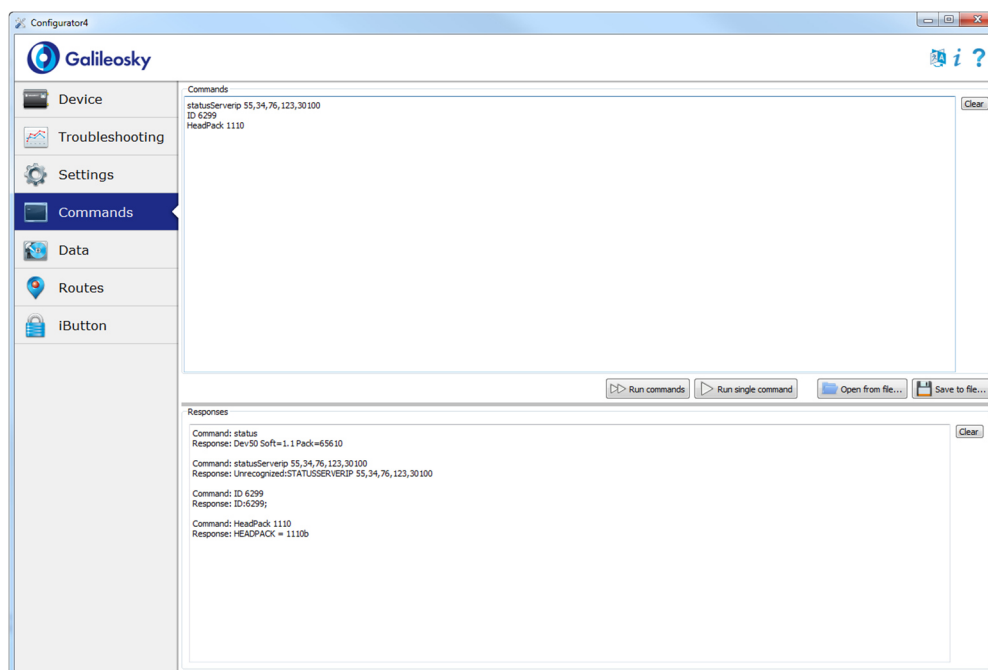
Response: ServerIp=55.34.76.123:30100

Command: ID 6299

Response: ID: 6299

Command: HeadPack 1 1 10

Response: HeadPack =

[illegible]

Example of saving and downloading parameters set

For quick configuration of several tracking devices with the same set of commands it is recommended to run the commands from a pre-saved file. To do this, enter a list of commands in the Command window. Make sure that they are typed correctly by pressing the **Run commands** button and then press **Save to file**.

The file will be saved in log configurator folder. Then press **Open from file...** button.

To run several commands at the same time press **Run commands** button.

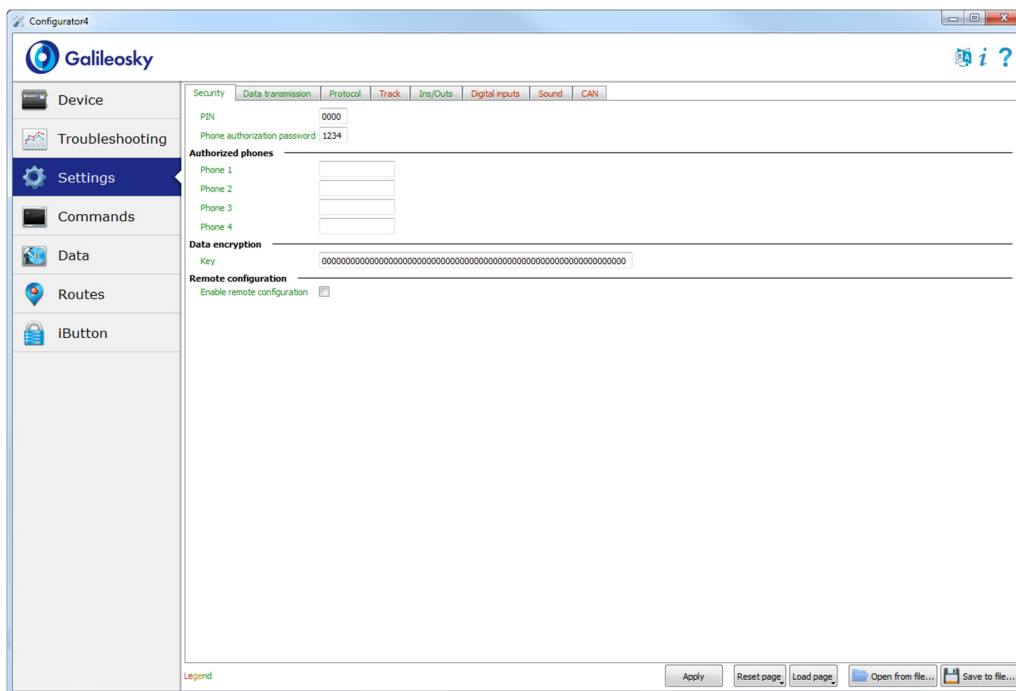
To run only one command, it is necessary to go to it in Commands window and press **Run single command** button.

Graphic interface settings

All main settings of the tracker are placed on tabs in the program upper part.

Security

This tab allows setting SIM-cards PIN code, phone authorization password, list of authorized phone numbers and encryption key for data transfer to the server.



Data Transmission

This tab allows setting SIM-card PIN code, APN for the Internet access, monitoring data processing servers, Wi-Fi access point.

The screenshot shows the 'Configuration4' window for the Galileosky device. The 'Data transmission' tab is selected, showing various configuration options. The left sidebar contains navigation links: Device, Troubleshooting, Settings (selected), Commands, Data, Routes, and iButton. The main content area is divided into several sections:

- Identification data:** Terminal number (50).
- Data servers:** Primary data server (192.168.1.1), Secondary data server (port 60522), Data transmission protocol of primary data server (GALILEOSKY), Data transmission protocol of secondary data server (GALILEOSKY).
- Wi-Fi:** SSID (Collector), Authentication type (WPA/WPA2), Password (qazxcdeasdf).
- Access point for SIM-card 0:** Name, User, Password.
- Access point for SIM-card 1:** Name, User, Password.
- SIM-cards switching:** Operation mode (use only SIM 0).
- List of mobile operator's codes for SIM-card 0:** List of codes (part 1), List of codes (part 2).
- List of mobile operator's codes for SIM-card 1:** List of codes (part 1), List of codes (part 2).

At the bottom, there are buttons for 'Apply', 'Reset page', 'Load page', 'Open from file...', and 'Save to file...'. A 'Legend' link is also present.

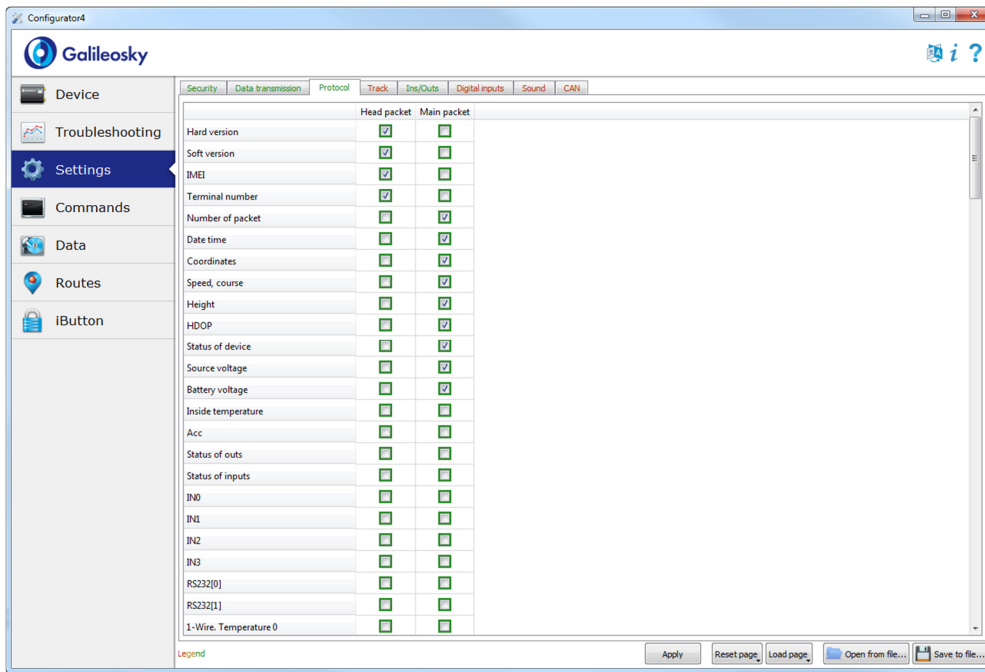
Protocol

The tracking device has its own data transmission protocol developed by RSA "Galileosky", LLC.

During device operating and data sending to the server, the following stages are possible:

- 1) Initialization of TCP/IP connection (does not need any additional settings);
- 2) Sending of initialization data described in the Head packet column (the data to be sent to the server are ticked in the first column);
- 3) If the tracking device has passed the first two stages, it starts sending accumulated packets according to the format described in the Main packet column.

To send the data the modem establishes a server connection and keeps it active even after sending the packet. It is done to save server connection traffic used to establish the connection to the server.



Track

This tab allows setting archive storage place and recording periods of coordinates at stops and in motion, details of track and false coordinates filtering.

The device filters coordinates by speed, acceleration, travelled distance, horizontal accuracy, number of satellites.

In addition, the tracking device allows filtering of coordinates crowding during stops by supply voltage at vehicles battery (Mhours command).

Parameters:

- supply voltage at stopped engine;
- supply voltage at started engine;

The first parameter is selected in the following way:

- 1) stop the engine for 5 minutes;
- 2) save the Vsupply voltage parameter from Device tab.

The second parameter is selected in the following way:

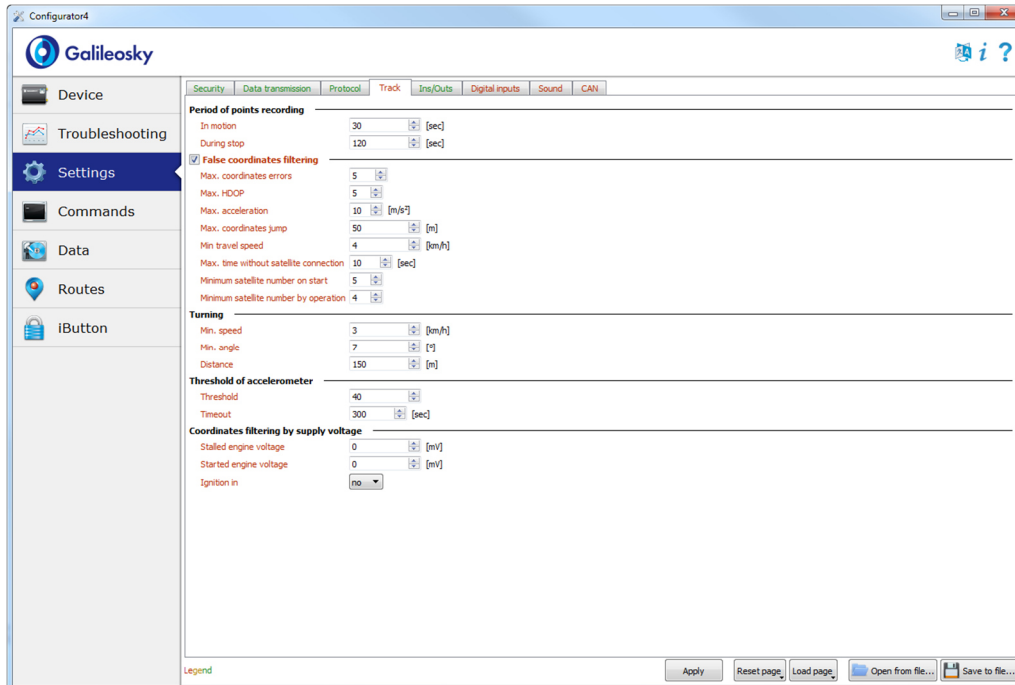
- 1) start the engine;
- 2) save the Vsupply parameter;
- 3) parameters of the mhours command are filled in and sent to the tracking device.

When the engine is started, the 9th bit will be set in the device status.

Each tracker is equipped with an accelerometer which allows filtering coordinates crowding during stops. It is based on vehicles vibration.

Parameters:

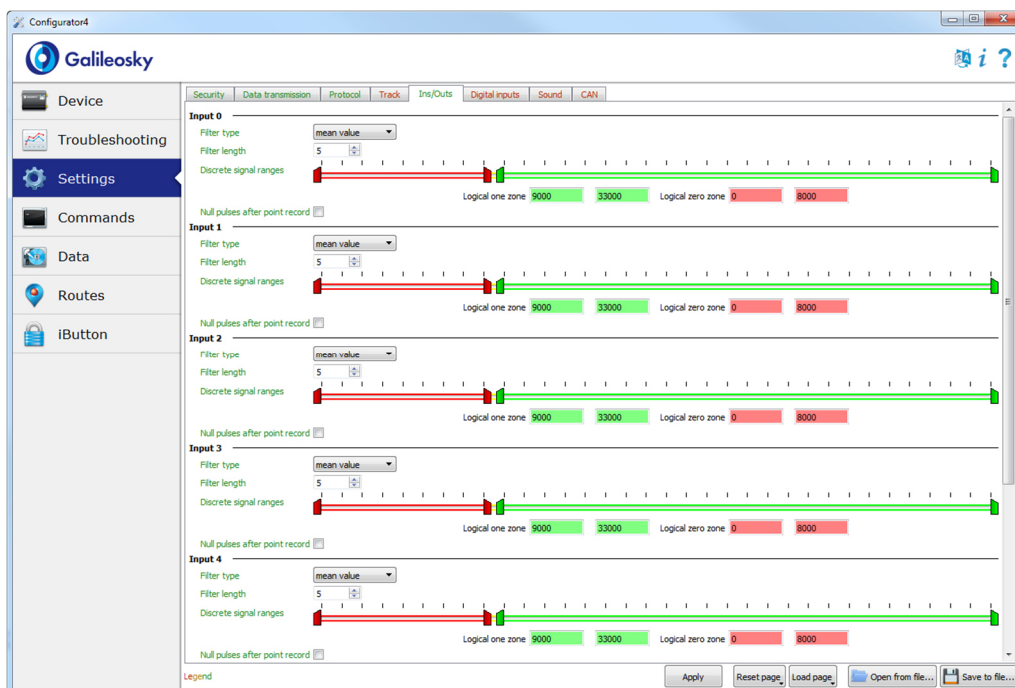
- Sensitivity – a standard unit, where the sensitivity of the 600 units corresponds to the acceleration of 1g (gravitational acceleration)
- Time parameter. The tracker switches on this filter when there is no vibration within a certain time period. The filter operates until the necessary amplitude acceleration is reached.



Inputs/Outputs

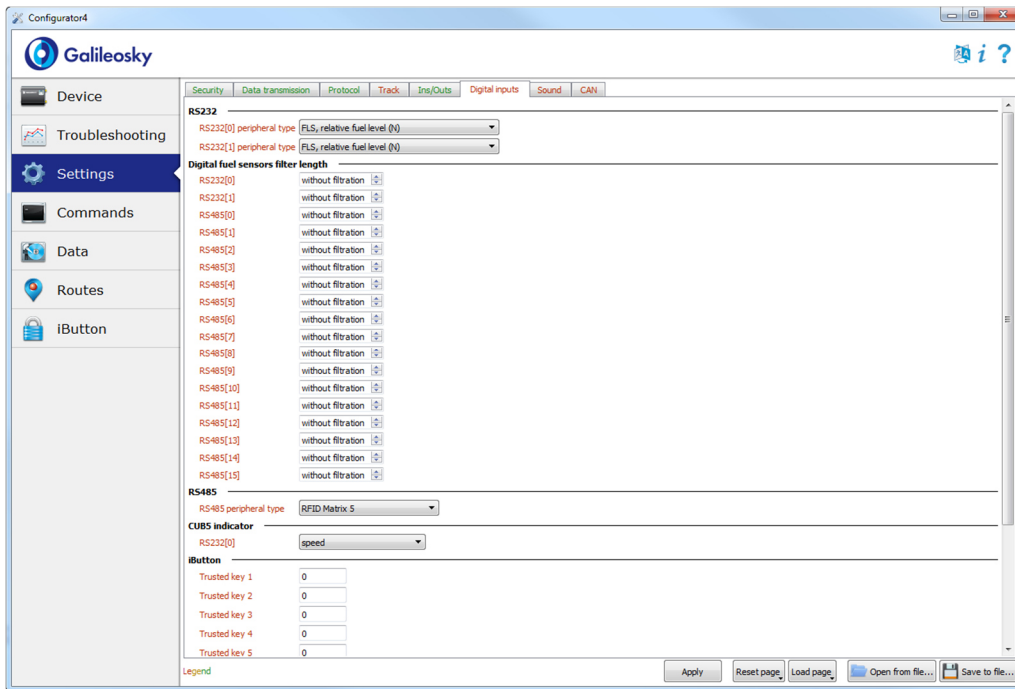
For inputs operating principles see section [Discrete-analog inputs \(DAI\)](#).

For discrete outputs description see section [Transistor outputs \(O/1\)](#).



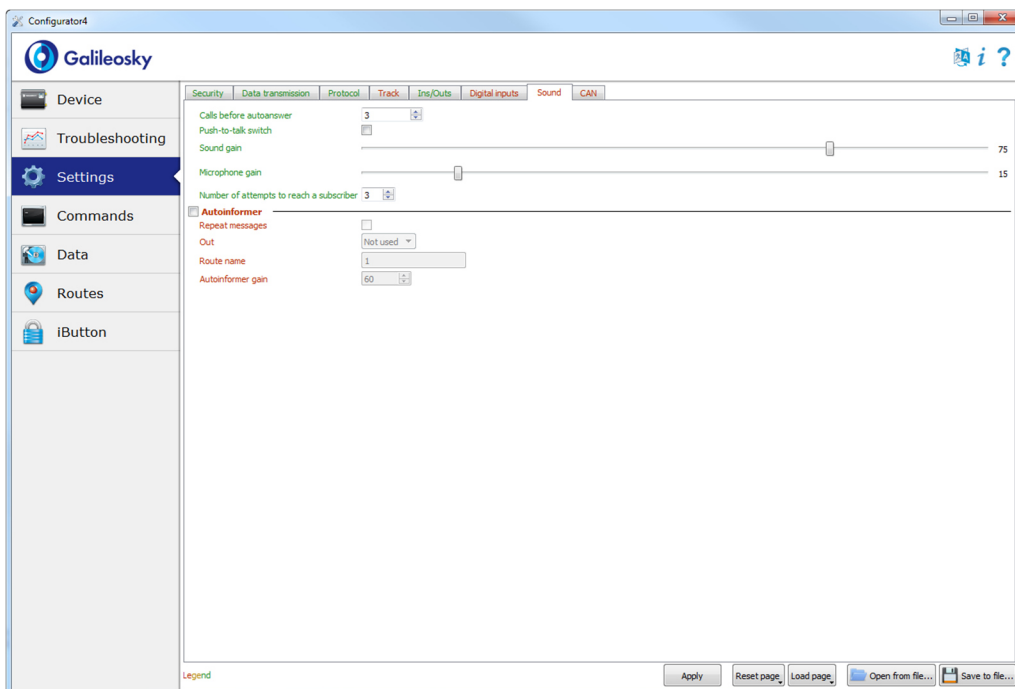
Digital inputs

This option allows choosing the type of peripheral connected to RS232 inputs, setting iButton keys, setting up periodical camera shooting.



Sound

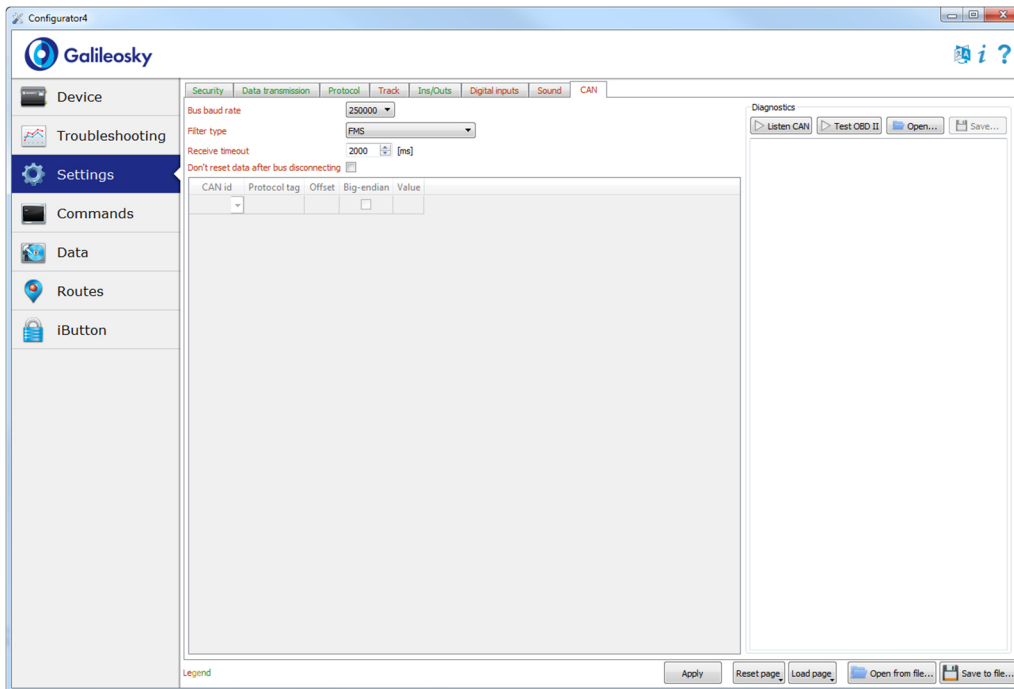
This option allows setting a microphone and sound gain via a GSM channel, the number of calls before autoanswer, as well as parameters of the Autoinformor.



CAN

This option allows setting a CAN-filter and scanning the CAN-bus for message identifiers being used.

After clicking Listen CAN the CAN-scanner will be activated and received messages will be displayed in the right-hand panel. When scanning is completed, it is possible to set tags in the protocol, in which the bus data will be sent. To do this: choose CAN-identifier and tag and point transmitted part of the message with a mouse. To delete the filter the corresponding message identifier should be selected and deleted.

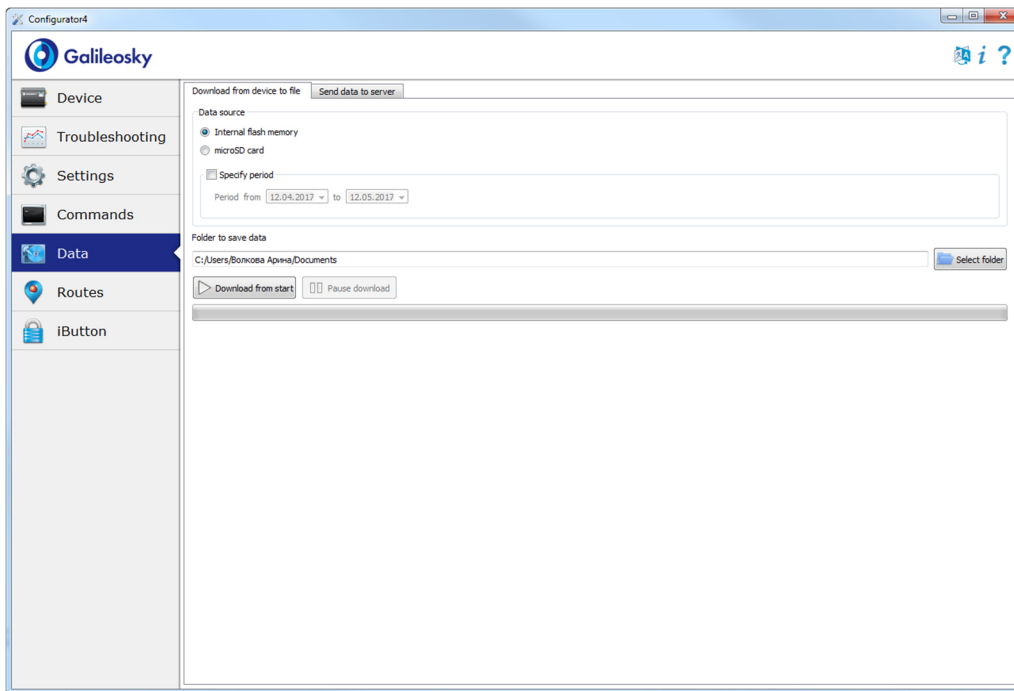


Data loading and sending to server

Data loading from the Tracker to file

This option allows transferring the data from the internal memory to a computer file via a USB cable.

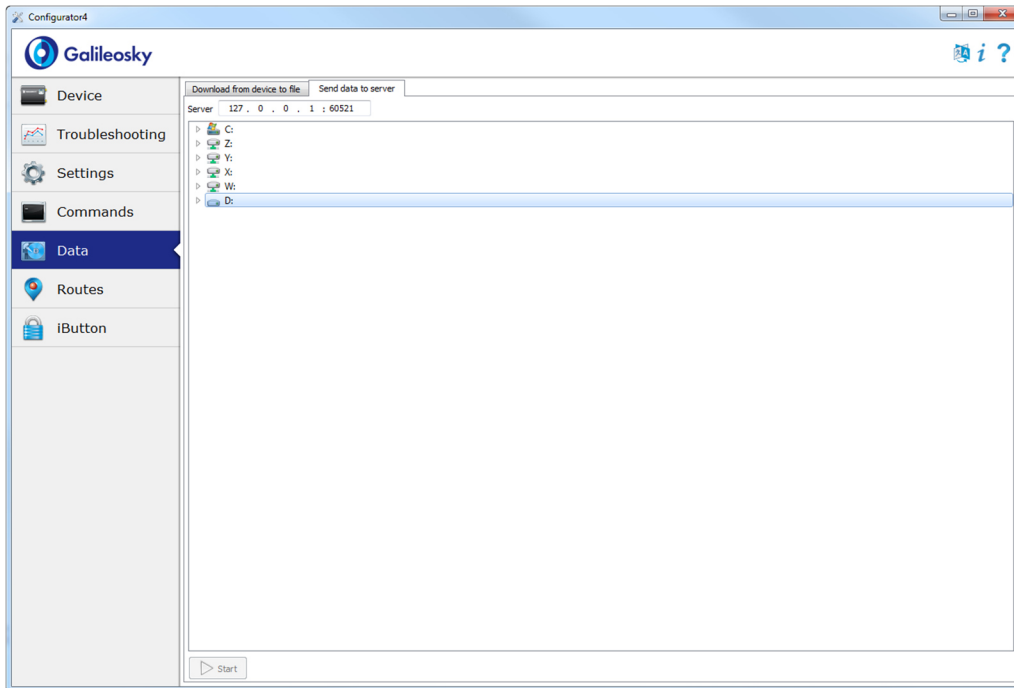
When data download from the internal memory occurs, only one file InternalFlash.csv will be created.



The Data transfer from the internal memory can be stopped and resumed.

Sending data to server

This option allows sending the data previously transferred from the tracking device to any server emulating the Galileosky protocol. To send it you should specify the IP-address and the server port and choose a file or a catalogue to be sent. If a catalogue is chosen, the program will send all its data files. The process can be stopped and resumed.



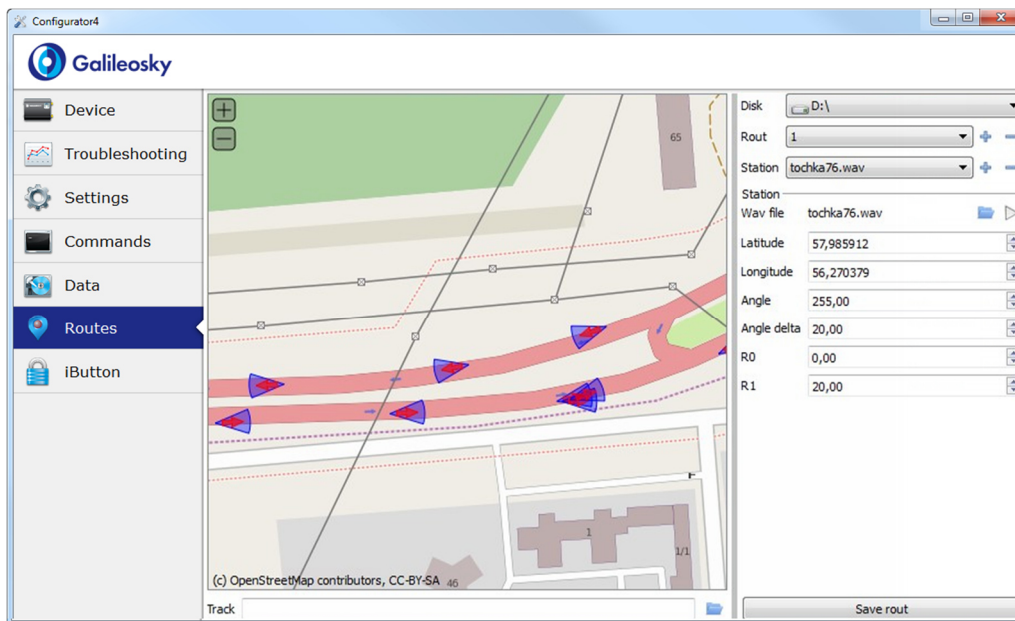
Routes for Autoinformers

This tab contains a graphical Autoinformers zones editor (section [Autoinformers function](#)).

The Internet access is required to display the map.

To edit the zones:

- 1) Insert a micro-SD card into the computer, choose the disk in the drop-down list. The route list and the track list will be loaded automatically.
- 2) Choose an edited route in the drop-down list or create a new one by clicking "+" on the right side of the route list. All stops will be loaded automatically, the map will move to the first stop.
- 3) Edit parameters of the zones. It can be done on the right panel as well as visually by moving red points with a mouse.
- 4) Create new zones. Click "+" on the right side of the stops list. A new zone will appear in the middle of the map, and then it can be edited.
- 5) Choose an audio file for the zone. It can be done in the Audio file drop-down list or you can load a new file by clicking "+" on the right side of the stops list. The following formats are supported: wav, mp3, flac, ogg, raw, gsm. The Configurator will automatically convert the file in appropriate format for the tracking device and copy it to the micro-SD card.
- 6) Press Save route to save changes to the micro-SD card.



To make sure all zones are correct, download the track developed after a trip. The Configurator supports the tracks uploaded from the internal memory of the tracking device or stored on the micro-SD card in the csv format.

Commands List

6

To request current settings, you need to issue a command without any parameters.

Settings for SMS control

Command format

AddPhone xxxx[,n]

Parameters

xxxx - is a four-digit password, 1234 by default
n – slot number (0-3) where a telephone number will be saved.

Explanation

When you configure the tracker from a cell phone, you should first authorize it by using the command. Up to 4 telephone numbers can be authorized.

Example

Request: AddPhone 1234
Reply: Phones (0) = 890101243456 (1) = (2) = (3) =

Command format

ChangePass aaaa

Parameters

aaaa - is a numeric four-digit password;

Explanation

Changing and viewing the current password.

Example

Request: ChangePass 5678
Reply: Password changed to '5678'

Command format

Phones P1,P2,P3,P4

Parameters

P1,P2,P3,P4 – authorized phone numbers in international format.

Explanation

Getting and setting the list of authorized phones

Example

Request: Phones +7901012345,,,

Reply: Phones (0)=+790101243456 (1)= (2)= (3)=

Data transmission settings

Command format

APN a,u,p

Parameters

a – access point name

u – user

p – password

Explanation

Access point settings for a SIM-card (SIM0)

Example

Request: APN internet.beeline.ru,beeline,beeline

Reply: GPRS:APN=internet.beeline.ru, user=beeline, pass=beeline

Command format

APN2 a,u,p

Parameters

a – access point name

u – user

p – password

Explanation

Access point settings for a SIM-card (SIM1) or a SIM-microchip

Example

Request: APN2 internet.beeline.ru,beeline,beeline

Reply: GPRS2:APN=internet.beeline.ru, user=beeline, pass=beeline

Command format

OPS0 n1,n2,n3,n4,n5,n6,n7,n8,n9,n10,n11,n12,n13,n14,n15

Parameters

n1-n15 – preferred GSM-networks

Explanation

A list of preferred GSM- networks for a SIM-card (SIM0). The network is defined by a mobile country code and a mobile operator code (the list of codes is given in http://www.itu.int/dms_pub/itu-t/opb/sp/T-SP-E.212A-2010-PDF-E.pdf), for example, the Russian Federation code is 250.

Example

Request: OPS0 25001,25099

Reply: OPS0:25001,25099,,,,,,,,,,,,;

Command format

OPS02n16,n17,n18,n19,n20,n21,n22,n23,n24,n25,n26,n27,n28,n29,n30

Parameters

n16-n30 – preferred GSM-networks

Explanation

Additional list of preferred GSM-networks for a SIM-card (SIM0).

Example

Request: OPS02 25001,25099

Reply: OPS02:25001,25099,,,,,,,,,,,,;

Command format

OPS1 n1,n2,n3,n4,n5,n6,n7,n8,n9,n10,n11,n12,n13,n14,n15

Parameters

n1-n15 – preferred GSM-networks

Explanation

A list of preferred GSM-networks for a SIM-card (SIM1) or a SIM-microchip.

Example

Request: OPS1 25001,25099

Reply: OPS1:25001,25099,,,,,,,,,,,,;

Command format

OPS12 n16,n17,n18,n19,n20,n21,n22,n23,n24,n25,n26,n27,n28,n29,n30

Parameters

n16-n30 – preferred GSM-networks

Explanation

Additional list of preferred GSM-networks for a SIM-card (SIM1) or a SIM-microchip.

Example

Request: OPS12 25001,25099

Reply: OPS12:25001,25099,,,,,,,,,,,,;

Command format

SIMSwitch mode

Parameters

mode – SIM-cards switching algorithm:

0 – only SIM0 is used

1 – cyclic switching between the SIM-cards, if you cannot send the data for 9 minutes

2 – switching according to the preferred GSM-networks list.

3 – only SIM1 or SIM-microchip is used;

Explanation

Setting of an algorithm of switching between a SIM-card and a SIM-microchip.

Example

Request: SIMSwitch 1

Reply: SIMSwitch:1;

Command format

Serverip host,port

Parameters

host – domain name of a server or its IP-address;

port – server port.

Explanation

Main server parameters where the monitoring data will be transmitted to.

Example

Request: Serverip m.7gis.ru,60521

Reply: SERVERIP=m.7gis.ru:60521

Request: Serverip 46.146.233.216,60521

Reply: SERVERIP=46.146.233.216:60521

Command format

Serverip2 ip1,ip2,ip3,ip4,port

Parameters

host –domain name of a server or its IP-address;

port – server port.

Explanation

Additional server parameters.

Example

Request: Serverip2 m.7gis.ru,60521

Reply: Serverip2=m.7gis.ru:60521

Command format

ID n

Parameters

n - tracker number.

Explanation

Changes device number. The same number is used as the device identifier in the EGTS protocol.

Example

Request: ID 123

Reply: ID=123

Command format

Protocol s, s2

Parameters

s1 – version of data transmission protocol for the main server:

0 – Galileosky protocol;

3 – EGTS;

4 – Galileosky protocol with compression.

s2 – version of data transmission protocol for the additional server:

0 – Galileosky protocol;

3 – EGTS;

4 – Galileosky protocol with compression.

Explanation

Choosing a protocol of monitoring data transmission to the server

Example

Request: Protocol 0,0

Reply: PROTOCOL:0,0;

Galileosky server exchange protocol settings

Command format

HeadPack bbbbbbbbbbbbbbb

Parameters

bbbbbbbbbbbbbb - tag set from 1 to 128.

If b is replaced by 1, the tag is on.

If b is replaced by 0, the tag is off.

Tag numeration order is given in section [Galileosky protocol data](#).

Explanation

Head packet configuring.

Example

Request: HeadPack 1 1 0

Reply: HeadPack=

[illegible]

This means that tags from the second to the fourth inclusive are on and the first and the rest tags inclusive are off.

Command format

HeadPack2 bbbbbbbbbbbbbbb

Parameters

bbbbbbbbbbbbbb - tag set from 129 to 256.

If b is replaced by 1, the tag is on.

If b is replaced by 0, the tag is off.

Tag numeration order is given in section [Galileosky protocol data](#).

Explanation

Head packet configuring.

Example

Request: HeadPack2 110000

Reply: HeadPack= 1 1 0 0 0 0 b,

This means that tags 129, 130, 131, 132 are off and tags 133 and 134 are on. All the following tags are off.

Command format

HeadPackBit index,value

Parameters

index – is tag number, which is on or off for transmission to the server

value – 1 if the tag should be transmitted to the server

0 if tag should not be transmitted to the server

Tag numeration order is given in section [Galileosky protocol data](#).

Explanation

Head packet configuring.

Example

Initially the second tag is off:

HeadPack=1100b

Switch on this tag.

Request: HeadPackBit 2, 1

Reply: HeadPack=1 1 00b

Command format

MainPack bbbbbbbbbbbbbbb

Parameters

bbbbbbbbbbbbbb – tag set from 1 to 128.

If b is replaced by 1, the tag is on.

If b is replaced by 0 the tag is off.

Tag numeration order is given in section [Galileosky protocol data](#).

Explanation

Main packet configuring.

Example

Request: MainPack 11111111111111111110000

Reply: MainPack= 00000000000000000000111111111111111110000b

This means that tags 1, 2, 3, 4 are off and tags 5-26 inclusive are on. All the following tags are off.

Command format

MainPack2 bbbbbbbbbbbbbbb

Parameters

bbbbbbbbbbbbbb – tag set from 129 to 256.

If b is replaced by 1, the tag is on.

If b is replaced by 0 the tag is off.

Tag numeration order is given in section [Galileosky protocol data](#).

Explanation

Main packet configuring.

Example

Request: MainPack2 110000

Reply: MainPack2=110000b

This means that tags 129, 130, 131, 132 are off and tags 133 and 134 are on. All the following tags are off.

Command format

MainPackBit index,value

Parameters

index –tag number, which is on or off for transmission to the server

value – 1 if this tag should be transmitted to the server

0 if this tag should not be transmitted to the server

Tag numeration order is given in section [Galileosky protocol data](#).

Explanation

Main packet configuring.

Example

Initially the second tag is off:

HeadPack=1100b

Switch on this tag.

Request: HeadPackBit 2,1

Reply: HeadPack=1100b

Command format

DataKey key

Parameters

Key – data encryption key in hexadecimal form, if it is equal to 0, data are not encoded.

Explanation

Specifies the key that encrypts the transmitted data.

Track parameters setting

Command format

Turning V,A,D,S,dS

Parameters

V – minimum speed that enables drawing of the track at turnings, [km/h];
A – minimum turn angle for the tracking device to record a track point, [°];
D – the distance above which the next packet will be saved to the device memory, [m];
S – the speed above which for dS-multiple value track point will be recorded, [km/h];
dS – speeding interval, [km/h].

Explanation

Configures track detail representation.

Example

Request: Turning 3,10,300,60,20

Reply: TURNING:Speed=3,Angle=10,Distance=300,SpeedEx=60,SpeedDelta=20

Command format

WrPeriod x,y

Parameters

x – Period of packet recording in memory in motion, [sec.];
y – Period of packet recording in memory when the vehicle stops, [sec.].

Explanation

Period of packets recording when the vehicle is moving or when it stops.

Example

Request: WrPeriod 60,180

Reply: WRPERIOD move=60 parking=180

Command format

GPS.Correct OnOff,MaxWrong,HDOP,Spd,Acc,Jump,TravelSpeed

Parameters

OnOff –coordinates filtering is on (1) or off (0);

MaxWrong – the number of wrong coordinates to be filtered (the recommended number is 5). This parameter accounts errors of acceleration exceed and jump, for other parameters the coordinates are always filtered;

HDOP – Maximum HDOP above which the coordinates are not updated;

Spd – Maximum speed. When it is exceeded, coordinates are considered false and are not updated, [km/h];

Acc –GPS or GLONASS data-based acceleration [m/s²];

Jump – Maximum coordinate jump in the nearest 2 seconds, [m];

TravelSpeed – Minimum speed for coordinates to be updated, [km/h]. This function is not suitable for low speed vehicles (tractors, asphalt placing machines)

Explanation

Allows filtering false coordinates: jumps when the vehicle stops, in or out of tunnels, near high-rise buildings

Example

Request: GPS.CORRECT 1,5,2,150,3,50,3

Reply: GPS.correct: OnOff=1, MaxWrong=5, MaxHDOP=2, MaxSpd=150, MaxAcc=3, MaxJump=50, MaxTravelSpeed=3;

Command format

GPS.Correct2 MaxNoSatTime,MinSatStart,MinSatWork

Parameters

MaxNoSatTime – maximum time without satellite connection when no disconnection is registered, [sec.];

MinSatStart – minimum number of satellites to be connected to when the tracking device is on;

MinSatWork– minimum number of satellites during operation of the tracker. If the number is smaller, a disconnection will be registered

Explanation

These settings affect coordinates updating, if filtering is on by **GPS. Correct** command.

Example

Request: GPS.CORRECT2 10,5,4

Reply: GPS.correct2:MaxNoSatTime=10,MinSatStart=4,MinSatWork=3;

Command format

AccSens Sens,TO

Parameters

Sens – accelerometer sensitivity.

TO – the time after the vehicle stops, during which coordinates are updated, [sec].

Explanation

This function allows avoiding unnecessary outliers after the vehicle stops.

Default value is 40,300.

Sens value equal to 600 is 1g (g –gravitational acceleration)

Example

Request: AccSens 40,300

Reply: Accelerometer sensitive: sens = 40, time out=300

Command format

Ignition N

Parameters

N – an input used as an ignition sensor:

0 – ignition sensor is not used;

1 – input 0 is used as ignition sensor;

2 – input 1 is used as ignition sensor;

3 – input 2 is used as ignition sensor;

4 – input 3 is used as ignition sensor;

Explanation

If there is no response for a given input, vehicle is considered to be not started, and coordinates are not updated. It allows avoiding outliers after the vehicle stops. Triggering on input is determined by the limits set by InCfg command (section Analog- discrete inputs settings).

Example

Request: Ignition 1

Reply: IGNITION:1;

Command format

Shock Mode,Angle,Timeout,ShockSens

Parameters

Mode – strike determination mode:

0 – strike determination is switched off;

1 – strike determination is switched on; X axis is in vertical position;

2 – strike determination is switched on; Y axis is in vertical position;

3 – strike determination is switched on; Z axis is in vertical position;

Angle – maximum incline angle $[0^{\circ}-180^{\circ}]$, value equal to 180 switches off incline determination;

Timeout – maximum allowable time when incline angle is exceeded, [sec.].

ShockSens – maximum acceleration by exceed of which a strike is detected. 600 points – gravitational acceleration.

Explanation

Switching on strike and incline determination mode.

Example

Request: Shock 3,30,5

Reply: Shock: Mode=3, MaxAngle=30, RT=5;

Command format

Mhours LoLevel,HiLevel

Parameters

LoLevel – input voltage + supply voltage by stopped engine, [mV];

HiLevel – input voltage +supply voltage by started engine, [mV];

Explanation

Allows filtering false coordinates after the vehicle stops

Example

Request: mHours 12000,14500

Reply: Mclock: lolevel=12000, hilevel=14500;

Information commands

Command format

Status

Explanation

Allows receiving device status at the moment of sending a command.

Dev – this device number;

Soft – current firmware version;

Pack – last recorded packet serial number;

TmDt – Current time and date;

Per – Current packet saving period (different when the vehicle is moving and stops);

Nav – Coordinates determination accuracy. 0 – coordinates are found.

Lat – Latitude;

Lon – Longitude;

Speed – Linear speed (vehicle speed);

HDOP – Horizontal accuracy (The closer to 1, the better);

SatCnt – Number of available satellites;

A – movement directional angle

Example

Request: Status

Reply: Dev50 Soft=91 Pack=17230 TmDt=10:58:6 20.6.9 Per=60 Nav=0 Lat=60.4007
Lon=31.0070 Speed=0.0194 HDOP=0.88 SatCnt=10 A=27.55

Command format

imei

Explanation

Allows obtaining a unique GSM/3G-unit identifier, 15byte and CCID of SIM-microchip, if there is one.

Example

Request: IMEI

Reply: IMEI 123456789012345, 12345678901234567890

Command format

imsi

Explanation

Allows obtaining a unique IMSI identifier of a SIM-card

Example

Request: IMSI

Reply: IMSI: 123456789012345;

Command format

inall

Explanation

Allows analog input values in0..in3 as well as digital fuel level sensor values and temperature, and accelerometer values with respect to three axes (10 bit for each axis starting with the zero bit) being obtained.

Example

Request: inall

Reply: INALL:in0=0,in1=0,in2=0,in3=0, RS232=10,1,Acc=332943891;

Command format

Insys

Explanation

Allows obtaining external source voltage, internal battery voltage, GPS aerial voltage, the main power bus voltage of the tracking device and also the temperature inside the tracking device.

Example

Request: insys

Reply: INSYS: Pow=12438, Vbat=4196,Vant=2921,Vdc=4115,Temper=37

Command format

RS485

Explanation

Allows receiving a value of the digital fuel level sensor connected via the RS485 interface. For each sensor the command prints fuel level and temperature values

Example

Request: RS485

Reply:

RS485 100,0;100,1;100,2;100,3;100,4;100,5;100,6;100,7;100,8;100,9;100,10;
100,11;100,12;100,13;100,14;100,15;

Command format

Temex0

Explanation

Allows finding temperature from the first four external DS18S20 thermometers. Format: the lower byte is the thermometer identifier; the higher byte is the temperature itself. To calculate the temperature the obtained value must be divided by 256 and rounded off to the whole number, with the fractional part deleted.

Example

Request: temex0

Reply: TemEx0: DS0=0,DS1=0,DS2=0,DS3=0

Command format

Temex1

Explanation

Allows finding temperature of the second four external DS18S20 thermometers. Format: the lower byte is the thermometer identifier; the higher byte is the temperature itself. To calculate the temperature the obtained value must be divided by 256 and rounded off to the whole number, with the fractional part deleted.

Example

Request: temex1

Reply: TemEx1: DS4=0,DS5=0,DS6=0,DS7=0

Command format

Canibut

Explanation

Allows obtaining current CAN-bus state and iButton decimal value

Example

Request: canib

Reply: CAN_Ib: CANA0=0,CANA1=0,CANB0=0,CANB1=0,iBut=0

Command format

statall

Explanation

Allows obtaining device, inputs, outputs decimal status and mileage according to GPS/GLONASS data.

Example

Request: statall

Reply: StatAll: Dev=1,Ins=2,Outs=7,Mileage=152;

Service commands

Command format

PIN N

Parameters

N – four-digit PIN-code of SIM-cards.

Explanation

SIM-card PIN-code and password setting for settings access in the Configurator. The default PIN-code is 0. If you enter the wrong code, the tracking device will be blocked for 25 seconds, and then reset. PIN-code is identical for both SIM-cards.

Example

Request: PIN 1234

Reply: PIN:1234;

Command format

Archive type

Parameters

type – data source for sending to the server:

0 – archive from the internal flash-memory;

1 – archive from the microSD card.

Explanation

Selection of data source for sending to the server. After command execution it is necessary to reset the tracker. Before you select a microSD card, delete the archive, created by earlier firmwares, (EraseTrackSD or delete files from Track catalogue through the Card-Reader).

Example

Request: ARCHIVE 0

Reply: ARCHIVE:0;

Command format

FlashArchive SendOrder

Parameters

SendOrder – order of data transmission from archive to server:

0 – the data are sent deep into the archives; the most current data are sent first, then the oldest ones.

1 – the data are sent in chronological order.

Explanation

Setting of the data transmission order to the server

Example

Request: FLASHARCHIVE 1

Ответ: FLASHARCHIVE: StraightSendOrder=1;

Command format

Efs begin,end

Parameters

Begin – start date of uploaded period in the format DDMMYY[HH[MM]],

End – end date of uploaded period in the format DDMMYY[HH[MM]],

Where DD is a day, MM – a month, YY – a year, HH – hours, MM – minutes.

If hours and/or minutes are not specified, the following time will be used: 00 hours 00 minutes for the start date, 23 hours 59 minutes for the end date.

Explanation

Upload data from the SD memory to the server for a specified period

Example

Request: EFS 010117,01011712

Reply: EFS: **Uploading of archive has been scheduled**

Command format

EraseCfg

Explanation

Setting default configuration.

Example

Request: EraseCfg

Reply: ERASECFG

Command format

EraseTrack

Explanation

Deleting all tracks from the memory.

Example

Request: EraseTrack

Reply: ERASETRACK

Command format

EraseTrackSD

Explanation

Deleting all tracks from the SD memory.

Example

Request: EraseTrackSD

Reply: ERASETRACKSD

Command format

ColdStart

Explanation

GLONASS unit cold start.

Example

Request: ColdStart

Reply: GLONASS cold start

Command format

Reset

Explanation

Allows resetting the device remotely.

Example

Request: Reset

Reply: Reset of device. Please wait 15 seconds...

Command format

Upgrade N

Parameters

Firmware upgrading up to the specified one. If 0 is specified, the tracking device will upgrade firmware up to the last stable one.

Explanation

Firmware upgrading up to the specified one.

Example

Request: Upgrade 47

Reply: UPGRADE SOFT= 47

Command format

RemoteConfig OnOff

Parameters

OnOff – turning on the remote configuration function:

0 – remote configuration is off;

1 – remote configuration is on.

Explanation

Turns on and off the remote configuration (section [Remote configuration](#))..

Example

Request: RemoteConfig 1

Reply: REMOTECONFIG:1;

Voice communication settings

Command format

GSMVolume k,m

Parameters

k – GSM-channel sound gain [1÷100].

m – GSM-channel microphone gain [1÷15].

The greater the parameter, the greater the gain.

Explanation

Allows speakerphone sound gain parameters being customized.

Example

Request: GSMVolume 75,15

Reply: GSMVOLUME=75,15

Command format

AutoAnswer n

Parameters

n – the number of calls before autoanswer. [0÷10]

If the parameter is equal to 0, the function is off.

Explanation

Incoming call results in the tracking device automatic answer.

Example

Request: AutoAnswer 1

Reply: AUTOANSWER=1

Command format

Calls N

Parameters

N – the number of call attempts

Example

Request: Call 3

Reply: CALL:3;

Command format

RingTo N

Parameters

N – a telephone number.

Explanation

Making a call from the tracker to the given telephone number.

Example

Request: RingTo 89119988899

Reply: RINGTO=89119988899

Command format

SendSMS Tel,Msg

Parameters

Tel – a telephone number to which SMS is sent

Msg – SMS template. It may contain parameters to insert current data:

%IMEI – device IMEI, %LAT – latitude, %LON – longitude.

Explanation

Sending SMS to the given telephone number

Example

Request: SendSMS 89119988899, Test

Reply: SMS sheduled

Command format

Tangenta OnOff

Parameters

OnOff – use a push-to-talk;

0 – a speaker and a microphone are connected;

1 – a push-to-talk KMC-25 is connected.

Explanation

Voice communication setting

Example

Request: Tangenta 1

Reply: TANGENTA:1;

Analog-discrete inputs setting

Command format

InCfg_num_in ft,fl,up_low,up_hi,down_low,down_hi,imp_null

Parameters

num_in – an input number, beginning from 0;

ft – filter type

0 – mean value computation;

1 – pulse count;

2 – frequency count

4 – Wiegand26 Data0

5 – Wiegand26 Data1

fl – filter length. It is used for average and discrete signal function;

up_low – lower limit of a discrete signal triggering, [mV];

up_hi – upper limit of a discrete signal triggering, [mV];

down_low – lower limit of a discrete signal failure, [mV];

down_hi – upper limit of a discrete signal failure, [mV];

imp_null – pulses counter behavior: 1 – counter is set to zero, 0 – counter continues increasing.

Explanation

Allows one of 4 analog/discrete inputs being configured.

Example

Request: InCfg0 0,10,8000,15000,0,3000,0

Reply:

INCFG0:FiltType=0,FiltLen=10,UpLow=8000,UpHi=15000,DownLow=0,DownHi=3000,ImpNull=0;

Command format

PowInCfg fl,up_low,up_hi,down_low,down_hi

Parameters

fl – average length of the filter [1÷50];

up_low – lower limit of a discrete signal triggering, [mV];

up_hi – upper limit of a discrete signal triggering, [mV];

down_low – lower limit of a discrete signal failure, [mV];

down_hi – upper limit of a discrete signal failure, [mV];.

Explanation

Allows configuring the operating limits for the external power input

Example

Request:

PowInCfg 10,8000,15000,0,3000

Reply: POWINCFG:FiltLen=10,UpLow=8000,UpHi=15000,DownLow=0,DownHi=3000

Command format

AccVal

Parameters

Obtaining filtered accelerometer mean-square value by three axes.

Accelerometer sensitivity:

min = 555mV/g; average = 600mV/g; max = 645mV/g;

Where g is gravitational acceleration ($g \approx 9.8 \text{ m/s}^2$).

Example

Request: AccVal

Reply: ACCVAL = 625

AccVal = 0.625B. As you can see, the accelerometer is affected only by the gravity force.

Transistor outputs setting

Command format

Out v,s

Parameters

v – output ordinal number (starting with the zero output);

s – desired state (0 – on-state transistor output;

1 – off-state transistor output).

Explanation

Transistor output control.

With one output being controlled, the others outputs' state remains unchanged.

Transistor outputs are off by default.

Example

Request: Out 1, 1

Reply: OUT(1..0) = 10

As you can see, all outputs except 1 are on.

Autoinformers setting

Command format

Autoinformers OnOff,Repeat,Out,FileName,Gain

Parameters

OnOff – enable/disable Autoinformers function: 1 – the function is enabled, 0 – the black box function is enabled (the navigation data are duplicated and saved to the external microSD card).

Repeat – determines whether the file should be replayed when the device is in the playback zone. If the value is 0, the file is played only once on entering the zone.

Out – output index, which is inverted during the audio file playing. 0 – no output is inverted, 1 – OUT0, 2 – OUT1, 3 – OUT2, 4 – OUT3, 5 – OUT4.

FileName – a route name. The route is understood as the number of zones to be announced.

Gain- sound gain

Explanation

For more information, see section Autoinformers.

Example

Request: Autoinformers 1,0,0,Marshrut 1,50

Reply: AUTOINFORMER:OnOff=1,Repeat=0,Route=Marshrut 1,Gain=50;.

Digital inputs settings

Command format

RS2320 nf

Parameters

nf – function number

- 0 – no function on RS232;
- 1 – digital fuel level sensor (relative level N);
- 2 - digital fuel level sensor (frequency F);
- 3 – external GLONASS unit;
- 4 – Galileo photo camera
- 5 – Garmin navigator
- 6 – CAN-LOG
- 7 – CUB5 indicator
- 9 – RS232-RS485 adapter;
- 10 – REP-500 energy meter;
- 11 – Carrier DataCOLD500 temperature recorder;
- 12 – CI-5010A weight indicator;
- 13 – PressurePro;
- 14 – ThermoKing temperature recorder;
- 15 – EuroScan temperature recorder;
- 16 – Tenzo-M weight indicator;
- 17 – test of port performance;
- 18 – AWT 640 weight indicator.

Explanation

RS232 port function setting.

Example

Request: RS2320 1

Reply: RS232_0: NumFunc=1;

Command format

DFilter RS2320

Parameters

RS2320 – filter length for a fuel level sensor connected to RS232 and RS485 ports, the number of successive sensor indications, which are averaged. If the value is equal to 1, there is no filtration.

Explanation

Digital fuel sensors indications filtering.

Example

Request: DFILTER 1,1,1,1,1,1,1,1,1,1,1,1,1,1,1,1

Reply:

DFILTER:RS232_0=1,RS232_1=1,RS485_0=1,RS485_1=1,RS485_2=1,RS485_3=1,RS485_4=1,RS485_5=1,RS485_6=1,RS485_7=1,RS485_8=1,RS485_9=1,RS485_10=1,RS485_11=1,RS485_12=1,RS485_13=1,RS485_14=1,RS485_15=1;

Command format

CUB5 N0

Parameters

N0 – parameter number displayed on the indicator connected to RS232 port.

Parameters:

- 0 – speed, accurate within 0.1, [km/h];
- 1 – directional angle accurate within 0.1 [°];
- 2 – external supply voltage [mV];
- 3 – internal accumulator voltage [mV];
- 4 – temperature inside the tracking device [°C];
- 5 – mileage according to the GPS/GLONASS data, accurate within 0.1, [km]
- 6 – input IN0;
- 7 – input IN1;
- 8 – input IN2;
- 9 – input IN3;
- 10 – RS232[0];
- 12 – temperature sensor 0 [°C];
- 13 – temperature sensor 1 [°C];
- 14 – temperature sensor 2 [°C];
- 15 – temperature sensor 3 [°C];
- 16 – temperature sensor 4 [°C];
- 17 – temperature sensor 5 [°C];
- 18 – temperature sensor 6 [°C];
- 19 – temperature sensor 7 [°C];
- 20 – CAN. Total fuel consumption [l]
- 21 – CAN. Tank fuel level, accurate within 0.1 [%]
- 22 – CAN. Coolant temperature [°C];
- 23 – CAN. Engine speed;
- 24 – CAN. mileage, accurate within 0.1 [km]
- 25-39 – CAN8BITR0 - CAN8BITR14;
- 40-44 – CAN16BITR0 – CAN16BITR4;
- 45-49 – CAN32BITR0 – CAN32BITR4;
- 50 – RS485[0];
- 51 – RS485[1];
- 52 – RS485[2].

Explanation

Settings of parameters display on the CUB5 indicator.

Example

Request: CUB5 1

Reply: CUB5:RS2320=1, RS2321=0;

Command format

iButtons ib1,ib2,ib3,ib4,ib5,ib6,ib7,ib8

Parameters

ib1-ib8 – four lower bytes of iButton identification hexadecimal number without the checksum.

For example, full key hexadecimal number:

09 91 02 0C 00 00 00 5C, where

09 – type of device (in this case, it is DS1982, for DS1990 – 01),

91 02 0C 00 00 00 – unique number,

5C – the checksum.

In this case, 91 02 0C 00 must be entered.

Explanation

List of iButton identifiers, the connection state of which is monitored by the tracking device.

Example

Request: iButtons 0091022C,0,0,0,0,0,0

Reply: IBUTTONS:0091022C,0,0,0,0,0,0

Command format

RS485FN nf

Parameters

nf – function number:

0 – fuel level sensors, DBG-S11D, PressurePro gateway device;

1 – RFID reader MATRIX 5;

2 – fuel level sensors, Galileosky camera (current serial production), DBG-S11D, PressurePro gateway device.

Explanation

RS485 port settings.

Example

Request: RS485FN 1

Reply: RS485FN:1;

Command format

IBCFG T1,T2

Parameters

T1 – timeout from iButton detachment to setting to zero of the key code in the memory cell of the tracker, for keys with the code of more or equal to 100000;

T2 – timeout from iButton detachment to setting to zero of the key code in the device`s memory, for keys with the code of less than 100000.

Explanation

Periods settings of iButton keys codes setting to zero.

Example

Request: IBCFG 4,1500

Reply: IBCFG:Timeout=4,Timeout100000=1500;

CAN settings

Command format

CanRegime Mode,BaudRate,TimeOut,DoNotCleanAfterTimeOut

Parameters

Mode – operating mode:

- 0 – CAN-interface is off and is not used;
- 1 – CAN-bus scanner (J1939_SCANNER mode);
- 2 – standard FMS filter (FMS mode);
- 3 – J1939 user filter 29 bit (J1939_USER_29bit mode);
- 4 – J1939 user filter 11 bit (J1939_USER_11bit mode);
- 5 – J1979 29bit identifiers (J1979_29bit mode);
- 6 – J1979 11bit identifiers (J1979_11bit mode);
- 7 – J1979 detection of bus parameters (J1979_SCANNER mode);
- 8 – J1979 user filter 29 bit (J1979_USER_29bit mode);
- 9 – J1979 user filter 11 bit (J1979_USER_11bit mode);
- 10 – J1979 search for responded identifiers (J1979_CHECK_PIDS mode).

BaudRate – data bus rate. It must be the same as the vehicle data bus rate. It can have the following values: from 10000 up to 500000. Typical values: 62500, 125000, 250000, 500000.

TimeOut – measured in msec. For CAN_SCANNER mode it is response latency. If it is too small, not all bus messages will be received. The recommended time for CAN_SCANNER is 2000 msec. For all the rest modes it is time to receive at least one message, otherwise, the value will be set to zero.

DoNotCleanAfterTimeOut – data should not be set to zero by disconnecting CAN-bus.

Explanation

General CAN-bus control.

Example

Example: switching on scanner for a 250000 b/sec bus with the message (answer) latency, equal to 2 sec.

Request: CanRegime 1,250000,2000

Reply: CANREG:Mode=1,BaudRate=250000,TimeOut=2000;

DoNotCleanAfterTimeOut=0;

Command format

ActiveCAN OnOff

Parameters

OnOff – operating mode:

0 – passive mode: packets receiving confirmations are not sent to the CAN-bus. It is a safe mode of operation. It does not interfere with the on-board equipment;

1 – active mode: packets receiving confirmations are sent to the CAN-bus.

Explanation

Control of packets confirmation sending to the CAN-bus.

Confirmation sending may be necessary by connection to the troubleshooting socket if the data cannot be read in passive mode.

Example

Request: ActiveCAN 1

Reply: ACTIVECAN:1;

Command format

CAN8BitR0 ID,Shift,BigEndian

Parameters

ID – captured bus identifier:

Shift – useful data shift in the received packet

BigEndian – byte order, 0 – from the lower byte to the higher, 1 – from the higher to the lower.

Explanation

Single CAN-tag content control.

Example

Request: Can8BitR0 419360256,1,0

Reply: CAN8BITR0:ID=419360256,BigEndian=0;

Commands: **CAN8BitR1**, ..., **CAN8BitR30**, **CAN16BitR0**, ..., **CAN16BitR14**, **CAN32BitR0**, ..., **CAN32BitR14** are similar to **CAN8BitR0** command.

Photo camera operation settings

Command format

GetPhoto d,t,n

Parameters

d – photo date, format DDMMYY, where DD – day, MM – month, YY – year;
t – photo time, format HHMMSS, where HH – hours, MM – minutes, SS – seconds;
n – port number to which the camera taking photos is connected:
0 – RS232[0],
1 – RS232[1]
2 – RS485.

Explanation

Request to transmit the nearest to the given time and data photo to the server.

Example

Request: GetPhoto 050511,052030,0

Reply: Send of photo is scheduled

Command format

PhotoCfg t1,t2,mode,res,confirm

Parameters

t1 –periodical shooting interval, [sec]. Photos are saved only to the SD-card, 0 – shooting only by event;
t2 – shooting interval [sec]. Photos are saved to the SD-card and sent to the server, 0 – shooting only by event;
mode – periodical shooting in geofences:
0 – photos are taken regardless of geofences;
1 – photos are taken only inside geofences;
2 – photos are taken only outside geofences.
res – picture resolution:
0 – 640x480 points;
1 – 320x240 points.
confirm – waiting for a confirmation of a picture reception from the server:
0 – do not wait;
1 – wait.

Explanation

Settings of a periodical camera shooting, picture format and image transfer protocol..

Example

Request: PhotoCfg 5,150,0,0,0

Reply: PHOTOCFG:WrPeriod=5,SendPeriod=150,Type=0,Size=0,Confirm=0;

Command format

MakePhoto

Explanation

Take a photo and send it to the server

Example

Request: MakePhoto

Reply: Photo ok

Command format

CleanPhotoQueue n

Parameters

n – port number to which the camera taking photos is connected:

0 – RS232[0],

1 – RS232[1]

2 – RS485.

Explanation

Mark all photos as sent.

Example

Request: CleanPhotoQueue 0

Reply: Photo queue is cleaned

Bootloader

7

The processor program (firmware) is a set of algorithms developed by RSA "Galileosky", LLC specialists. Owing to this program, the central processor receives the data from different system units, processes them logically and mathematically and takes decisions for control commands of controller units to be worked out depending on the situation.

Bootloader is a device's sub-program allowing the main program part being updated.

The main program can be downloaded via the USB or GPRS channel in the tracking device.

USB Channel Download

Install Configurator for updating via USB-channel, after connecting the tracking device, select "Upgrade firmware".

GPRS channel download

1. Connect the tracking device to the external power supply;
2. APN settings must conform to the SIM-card inserted in the tracker, otherwise, the device flashing will not happen, and the tracking device will return to the operating mode;

Give the following command: UPGRADE firmwareN^o using any of the available channels (SMS, GPRS, USB), where firmwareN^o is the necessary firmware version. UPGRADE 0 initiates downloading the latest firmware;

3. You may see if the flashing is in progress by LEDs blinking;
4. In 15-25 minutes (depending on connection conditions and GPRS terms of service by operator) upgrade will be completed, and the tracking device will turn into operation mode automatically.

Using analog inputs to enter bootloader mode

After the device power supply is off, energize all analog-discrete inputs (section [Contacts description](#)) by applying the voltage of $7.0V \pm 0.2V$ until the tracking device enters the bootloader mode.

This function is used only during an improper device flashing. An improper firmware is the firmware designed for tracking devices with the other functional.

LED operation during reflashing

Depending on the GSM/3G-modem and microcontroller units activation stages, the tracking device will go through the following stages:

Yellow LED blinking, times	GSM/3G-modem activation stage
6	Procedure of GSM/3G-unit activation was successful.
5	GPRS/3G-service registration was successful.
4	Firmware update connection to the server.
3	The tracking device switched to downloading mode.
2	Server connection is not lost, and the tracker is in downloading mode.
1	First request sending was successful.

Galileosky Protocol Data

8

Bit number is entered in mainpackbit and headpackbit commands for selecting parameters, transmitted to the server.

Bit №	Description
1	Hardware version
2	Firmware version
3	IMEI
4	Device's identifier
5	Number of an archive record
6	Greenwich date and time
7	Coordinates in degrees, number of satellites, indication of coordinates determination correctness
8	Speed in km/h and direction in degrees
9	Height, m
10	HDOP
11	Status of device
12	Supply voltage, mV
13	Battery voltage, mV
14	Device temperature, °C
15	Acceleration
16	Status of outputs
17	Status of inputs
18	Input voltage 0, mV Depending on settings: 1. voltage, mV; 2. number of impulses; 3. frequency, Hz.
19	Input voltage 1, mV Depending on settings: 1. voltage, mV; 2. number of impulses; 3. frequency, Hz.

Bit №	Description
20	Input voltage 2, mV Depending on settings: 1. voltage, mV; 2. number of impulses; 3. frequency, Hz.
21	Input voltage 3, mV Depending on settings: 1. voltage, mV; 2. number of impulses; 3. frequency, Hz.
22	RS232 0
23	RS232 1
24	Thermometer 0 identifier and measured temperature, °C
25	Thermometer 1 identifier and measured temperature, °C
26	Thermometer 2 identifier and measured temperature, °C
27	Thermometer 3 identifier and measured temperature, °C
28	Thermometer 4 identifier and measured temperature, °C
29	Thermometer 5 identifier and measured temperature, °C
30	Thermometer 6 identifier and measured temperature, °C
31	Thermometer 7 identifier and measured temperature, °C
32	iButton first key identification number
33	CAN-bus (CAN_A0) and CAN-LOG data. Fuel used by a vehicle from the date of manufacturing, l.
34	CAN-bus (CAN_A1) and CAN-LOG data; Fuel level, %; Temperature of coolant °C; Engine speed, rotations/min.
35	CAN-bus (CAN_B0) and CAN-LOG data. Vehicle`s mileage, m.
36	CAN_B1
37	CAN8BITR0 Or vehicle speed from CAN-LOG, km/h
38	CAN8BITR1 or the 3 rd byte of prefix S CAN-LOG
39	CAN8BITR2 or the 2 nd byte of prefix S CAN-LOG
40	CAN8BITR3 or lower byte of prefix S CAN-LOG
41	CAN8BITR4 or the 3 rd byte of prefix P CAN-LOG
42	CAN8BITR5 or the 2 nd byte of prefix P CAN-LOG

Bit №	Description
43	CAN8BITR6 or the 1 st byte of prefix P CAN-LOG
44	CAN8BITR7 or lower byte of prefix P CAN-LOG
45	CAN8BITR8 or higher byte of prefix WA CAN-LOG
46	CAN8BITR9 or 4 th byte of prefix WA CAN-LOG
47	CAN8BITR10 or 3 rd byte of prefix WA CAN-LOG
48	CAN8BITR11 or 2 nd byte of prefix WA CAN-LOG
49	CAN8BITR12
50	CAN8BITR13
51	CAN8BITR14
52	Second iButton key identification number
53	Total mileage according to GPS/GLONASS units, m.
54	State of iButton keys, identifiers of which are set by iButtons command.
55	Depending on settings: 1. CAN16BITR0 2. the 1 st vehicle`s axle load, kg 3. failure code OBD II
56	Depending on settings: 1. CAN16BITR1 2. the 2 nd vehicle`s axle load, kg 3. failure code OBD II
57	Depending on settings: 1. CAN16BITR2 2. the 3 rd vehicle`s axle load, kg 3. failure code OBD II
58	Depending on settings: 1. CAN16BITR3 2. the 4 th vehicle`s axle load, kg 3. failure code OBD II
59	Depending on settings: 1. CAN16BITR4 2. the 5 th vehicles axle load, kg 3. failure code OBD II
60	Depending on settings: 1. CAN32BITR0 2. total time of engine operation, h.

Bit №	Description
61	Depending on settings: 1. CAN32BITR1 2. CAN-LOG, R prefix, fuel level, l
62	Depending on settings: 1. CAN32BITR2 2. CAN-LOG, user`s prefix
63	Depending on settings: 1. CAN32BITR3 2. CAN-LOG, user`s prefix
64	Depending on settings: 1. CAN32BITR4 2. CAN-LOG, user`s prefix
77	RS485. A value from fuel level sensor with address 0. Relative fuel level.
78	RS485. A value from fuel level sensor with address 1. Relative fuel level.
79	RS485. A value from fuel level sensor with address 2. Relative fuel level.
80	RS485. Fuel level sensor with address 3. Relative fuel level and temperature.
RS485. Fuel level sensor with addresses 4-14, with numbers 81-91. Relative fuel level and temperature.	
92	RS485. FLS with address 15. Relative fuel level and temperature.
93	Extended data RS232[0]. Depending on settings: 1. Temperature from fuel level sensors connected to zero RS232 port, °C. 2. Weight received from weight indicator.
94	Extended data RS232[1]. Depending on settings: 1. Temperature from fuel level sensors connected to zero RS232 port, °C. 2. Weight received from weight indicator.
95	RS485. Temperature from fuel level sensor with address 0, °C.
96	RS485. Temperature from fuel level sensor with address 1, °C.
97	RS485. Temperature from fuel level sensor with address 2, °C.
129	CAN8BITR15
Tags CAN8BITR16 - CAN8BITR29 similar to CAN8BITR16 with numbers 130-143	
144	CAN8BITR30
145	CAN16BITR5
Tags CAN16BITR6 – CAN16BITR13 similar to CAN16BITR5 with numbers 146-153	
154	CAN16BITR14

Bit №	Description
161	CAN32BITR5
Tags CAN32BITR6 – CAN32BITR13 similar to CAN32BITR5 with numbers 162-169	
170	CAN32BITR14
171	REP-500 electricity meter readings
173	Refrigeration unit data
174	EcoDrive and driving style determination
175	PressurePro tires pressure monitoring system, 34 sensors
177	User 0 data
Tags from users data with numbers 178-183	
184	User 7 data
185	User data array

Example 1.

The tracking device should be configured so that the head pack (HeadPack) contains information about the device version (HardVersion), firmware version (SoftVersion), unique 15-digit GSM/3G-unit identifier

(IMEI), device user ID (ID device).

Correspondent tag mask: 000000000000000000000000000000001111.

To apply the settings, we should use the following command

[illegible]

Example2.

It is necessary to configure the main packet (sent in normal mode) so that the tracker's user ID (ID device), packet number (NumberOfPacket), date and time of packet record (TimeDate), coordinates are sent. Correspondent tag mask:
000000000000000000000000000000001111000

To apply the settings, we should use the command: `MainPack 1 1 1 1 000`.

In this case, we have omitted zeros at once.

Additional Information

Certifying

The tracking device is certified to comply with GOST R.

Warranty

RSA "Galileosky", LLC hereby guarantees the realization of consumers' rights provided by the local laws throughout Russia and the CIS.

RSA "Galileosky", LLC guarantees the operability of the tracking device subject to compliance with the instructions set out in the above user`s manual.

Warranty conditions

The warranty period is 12 months since the day of purchase.

Note: a defective tracker (with cracks and fissures, dents and impact marks and etc.) due to consumer's fault resulting from inappropriate maintenance, storage and transportation is not liable to warranty.

The above also holds for a device without the body or battery.

In case the guarantee document proving the device sale to the customer does not contain the date of purchase, the name and seller's seal, the warranty period starts since the day of production.

The consumer has the right for free maintenance in the manufacturer's service center if a production or design defect appeared during the warranty period. The consumer has the right for maintenance during the whole period of operation of the device. The consumer has all the other rights provided by the laws of the Russian Federation and the CIS.

If the failure cause cannot be found at the moment of appeal, a technical examination is held, which cannot exceed 30 days since the moment of appeal.

The warranty does not apply in case of:

- Inappropriate transportation, storage or maintenance, described in User's Manual;
- Unauthorised opening the device during the warranty period;
- Repairing controlled by someone or some organization not authorised by Galileosky during the warranty period;
- Signs of electrical and/or other damage due to prohibitive mains parameter changes, misapplication and neglect of the device;
- Physical damage of the device body and board, SIM holder, aerals or wires break;
- Traces of oxidation of outer and inner parts or exposure of the device body to moisture;

- Theft or criminal damage of the external aerial or cable;
- Damages caused by foreign objects, substances, liquids, insects coming into body;
- Damage caused by exposure to high temperature or intense microwave radiation;
- Damage caused by elemental forces, fire, social factors, random external factors and accidents;
- Damage caused by parameters incompatibility or inappropriate attachment of additional devices or sensors to the tracker;
- Operation of the tracking device by the vehicle network voltage deviating from the range mentioned in technical specifications.
- Damages caused by incorrect installation of the tracking device to the vehicle;
- Failure in tracker's operating due to incompatibility of software version and tracker version.
- Connection socket, contacts and SIM-holders are not covered under warranty.
- Warranty period for aeriels – 6 (six) calendar months from the moment of realization note in device passport, but not more than 8 (eight) calendar months from the moment of device shipping to the Buyer from the Manufacturer storage included in delivery note.
- Warranty period for a processor, GSM module, GLONASS/GPS module – 34 (thirty-four) calendar months from the moment of realization note in device passport, but not more than 36 (thirty-six) calendar months from the moment of device shipping to the Buyer from the Manufacturer storage included in delivery note.

ATTENTION! The manufacturer shall in no case be liable for claims concerning the damage or loss of the data exceeding the cost of the product, as well as claims for incidental, special or consequential damages (including in each case, without limitation, damages for inability to use the equipment, loss of the data, loss of business, loss of profit, loss of savings, loss of time), arising out of the use or inability to use the equipment within legal limits.

ATTENTION! The Warranty does not affect the statutory rights of the consumer, such as the guarantee of satisfactory quality of work or conformity of the product to the purpose for which analogous products are used under normal conditions and service maintenance and also your rights with regard to the seller of the product resulting from the fact of purchase and contract of sale and purchase.

ATTENTION! Terms of Warranty service, which are in conflict with the current law, have no legal effect and are subject to the current law.

ATTENTION! If the Purchaser fails to comply with the Terms of Warranty, the validity of the Warranty is void.

Contacts of Galileosky Technical Support Team

+7 (342) 270 07 99 add. 2

+7 (499) 704 47 99;

e-mail: support@7gis.ru